

DARIA SVINTSOVA

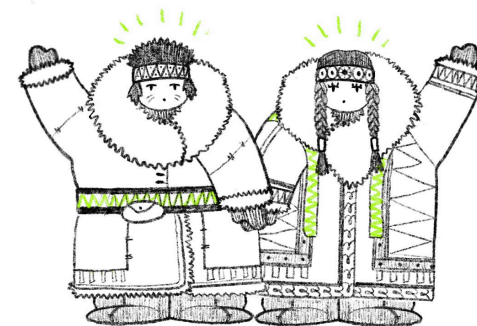
dsvincova99@gmail.com

+7 916 737 63 29

Moscow/Russia

selected works 2019-2022

PORTFOLIO



CONTENTS

01

DIPLOMA PROJECT

project type: academic,
final thesis
type of work: individual
work
date: 2021-2022
supervisor: Tatiana
Nabokova
t.b.nabokova@marchi.su
location: Sochi, Russia

03-08

02

GOLD MEDAL
UNIVERSITY CONTEST

project type: university
contest
type of work: individual
work
date: january 2022
result: top 5

09-11

03

SCHOOL

project type: academic,
fourth year
type of work: individual
work
date: sep'20-oct'20
supervisor: Tatiana
Nabokova
t.b.nabokova@marchi.su
location: Dudinka, Russia

12-16

04

RESIDENTAL DISTRICT

project type: academic,
fourth year
type of work: individual
work
date: feb'21-may'21
supervisor: Tatiana
Nabokova
t.b.nabokova@marchi.su
location: Moscow, Russia

17-20

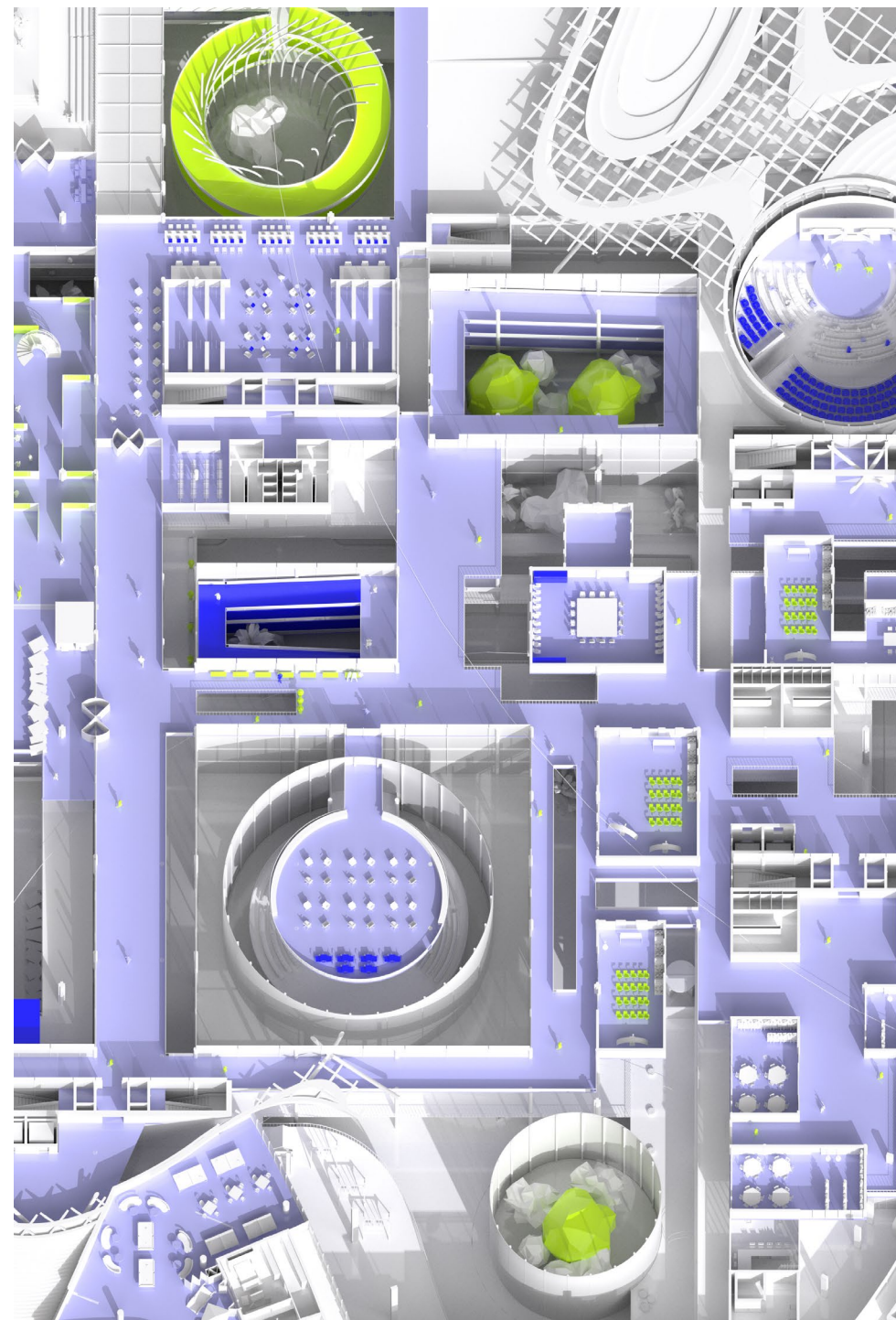
01 THE CITY INSIDE THE CITY

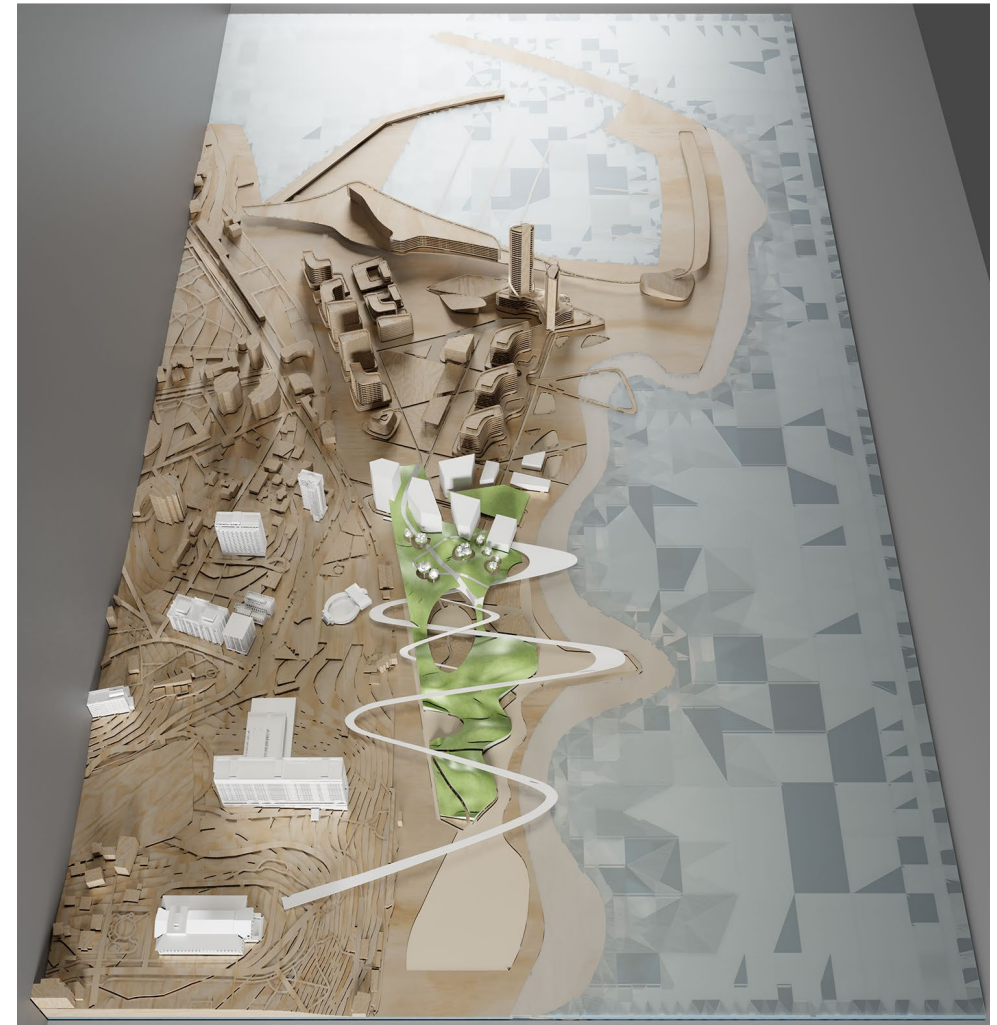
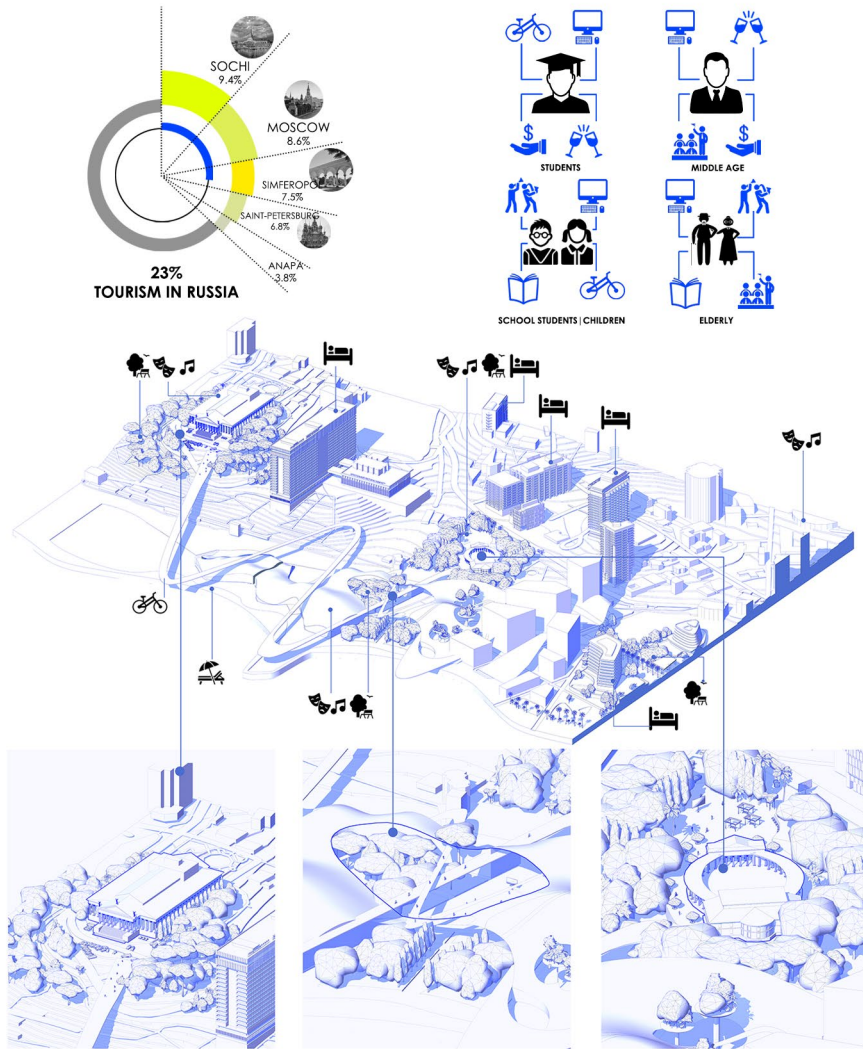
From the soviet times on, Sochi has been the du jour and the most prominent touristic destination in Russia. One of the severe challenges, however, is its mono-seasonal character. Unlike Krasnaya Polyana region, other parts of the city are not in great demand during the cold weather. It leads to multiple negative consequences: drops in employment rates and the loss of tourist capital.

Recently, Sochi has become more business attractive as a hub to hold various forums and team-building activities. Moreover, it is a comfortable spot for freelancers who strive for peace in a mild climate out of the urban. The city lacks working and educational space – places to set the events with high-quality catering service.

This project's primary goal was to design a significant leisure Center adjunct to the philharmonic hall that would be attended by visitors and city dwellers all year around. The sub-goal was to organically implement the central image into the existing system without disturbing the overall city's panorama.

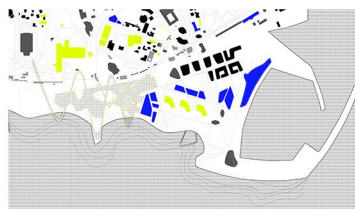
The image solution of this Festival center sustains the landscape characteristics, naturally continuing the tree-covered hill with added artificial green hills of the Festival center.





masterplan

FUNCTIONALITY



theaters, hotels, culture, residential buildings

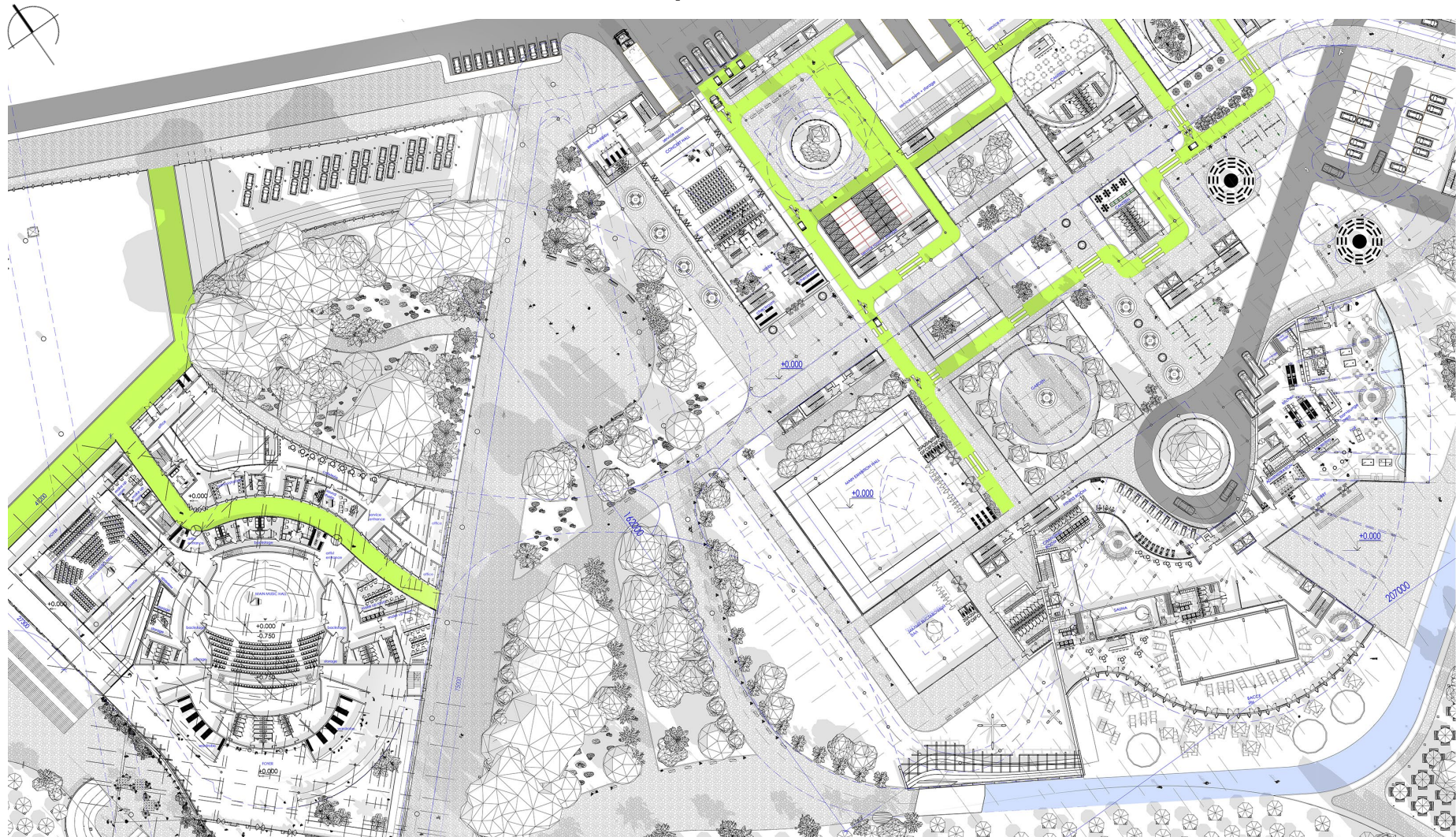
HEIGHT



> 100 m, < 100 m, < 70 m, < 40 m, < 20 m, < 15 m, < 10 m

The city's new master plan prioritizes three critical areas for Sochi development until 2040: resort areas advancement, expansion, and modernization of cultural and leisure institutions, including the construction of the prominent cultural space in the city's central district and the improvement of the transportation network. The zigzagging pattern of the routes in the resort zone is preserved in tracks for roller-skating tracks, bicycles, skating, and scooters uplifted over the hills.

plan +0.000

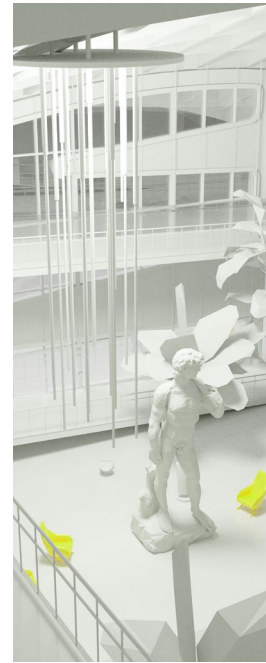


paths for service transport

The functionality of the complex zones is reflected in the system of transformative halls available for rent, an expo center that comprises three space sites: big and small halls and an art gallery. Additionally, there is a TED lecture auditorium, artistic workshops, and a technopark. The latter is shaped as glass balls. Visitors can enjoy the cinema system for local premieres and classrooms to teach scripting. Finally, the complex has a hotel, a restaurant, and a spa zone.



panorama view



foyer view



bar view

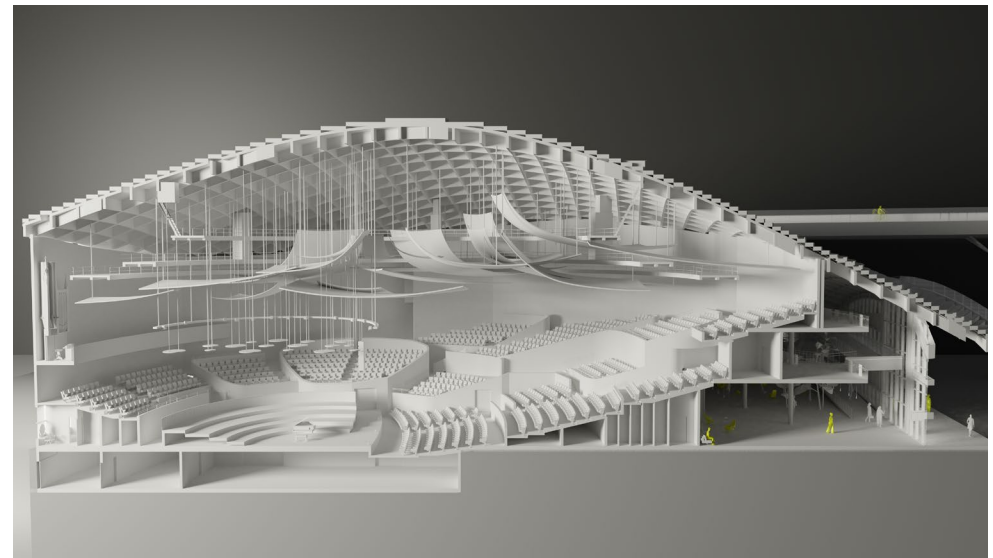
THE GREAT PHILHARMONY

The Great Philharmony is the merging and reimagining of several notable projects in one grand center. The expo center in China inspired the idea of the hill. The primary sense was to imitate the horizontals of the landscape, which would create a solid hill-shaped functional green park. The hill was connected to the mainland of the embarkment from the Zimny theater and ran to the hill of the leisure center that flew into the Frunze Park by the Letny theater.

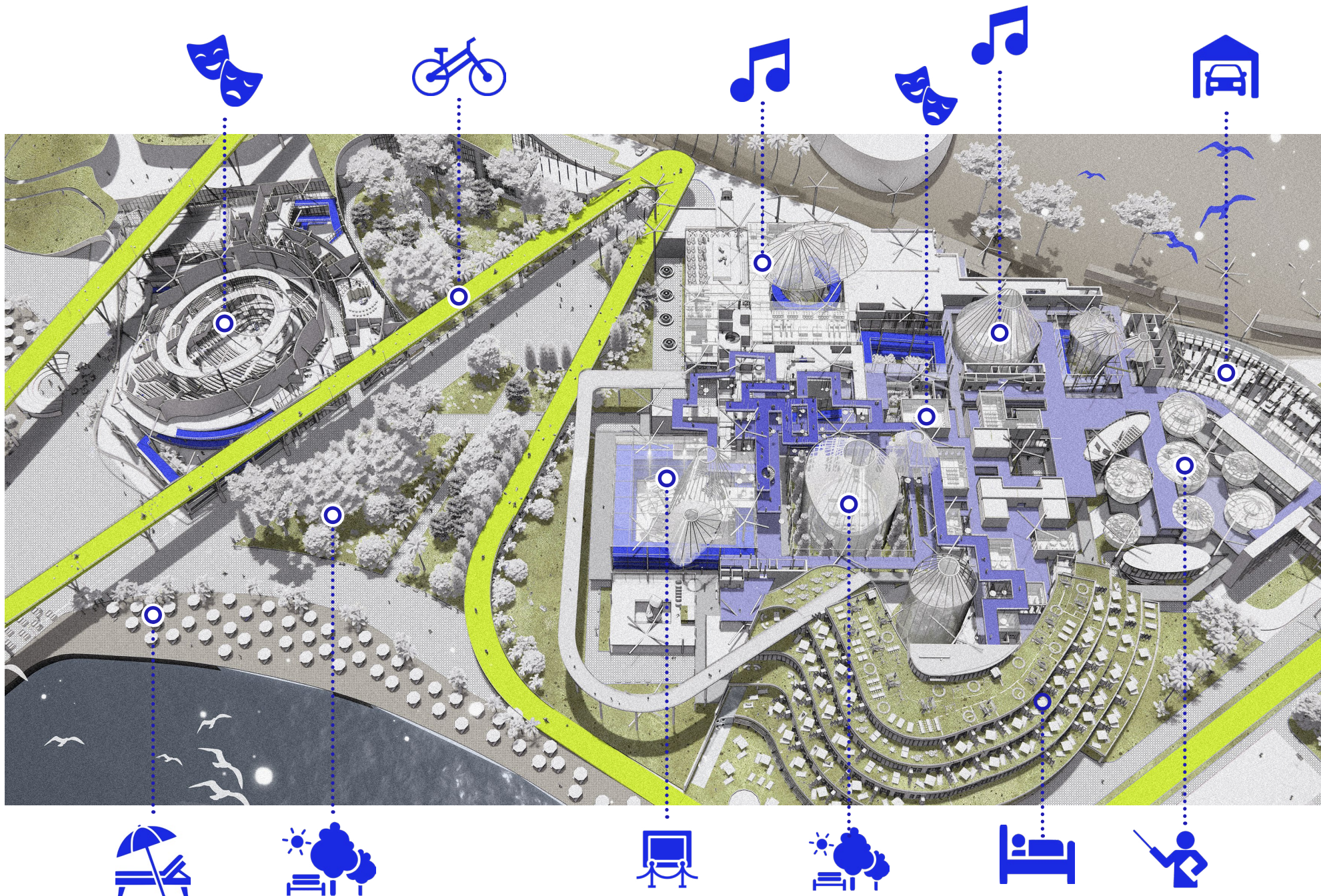
The accents are distributed between the grand hall and its subzones. For instance, the specifics of the festival center include the system of rehearsal sites tightly intertwined with the philharmonic processes.

A so-called gap has been created between the main theater complex and the system of rehearsal halls, which not only solves the issue of interference from outside but also allows visitors to go inside the festival complex without going around it.

The main hall is a bunch of wine grapes wrapping around the stage. The design of the Shanghai bureau MAD Architects of the Chinese Philharmonic was taken as the basis for the hall's shape. Ramps have been designed appropriately to ensure complete mobility. It is a means of vertical movement and is also the main interactive feature of the foyer.



section

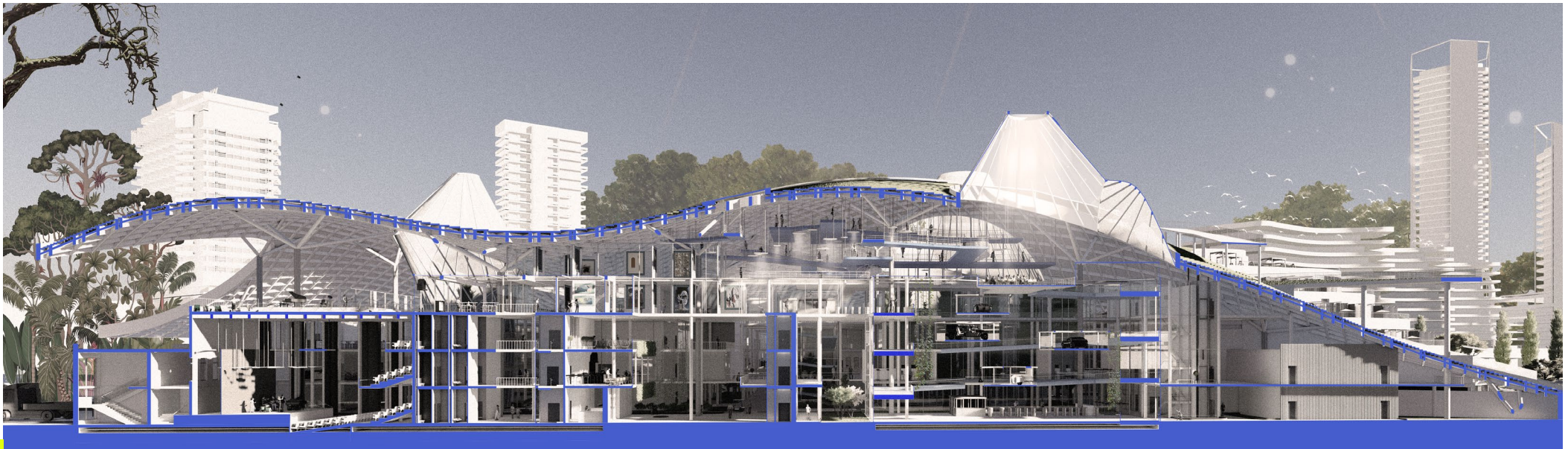




public space



suite's view



section 1-1

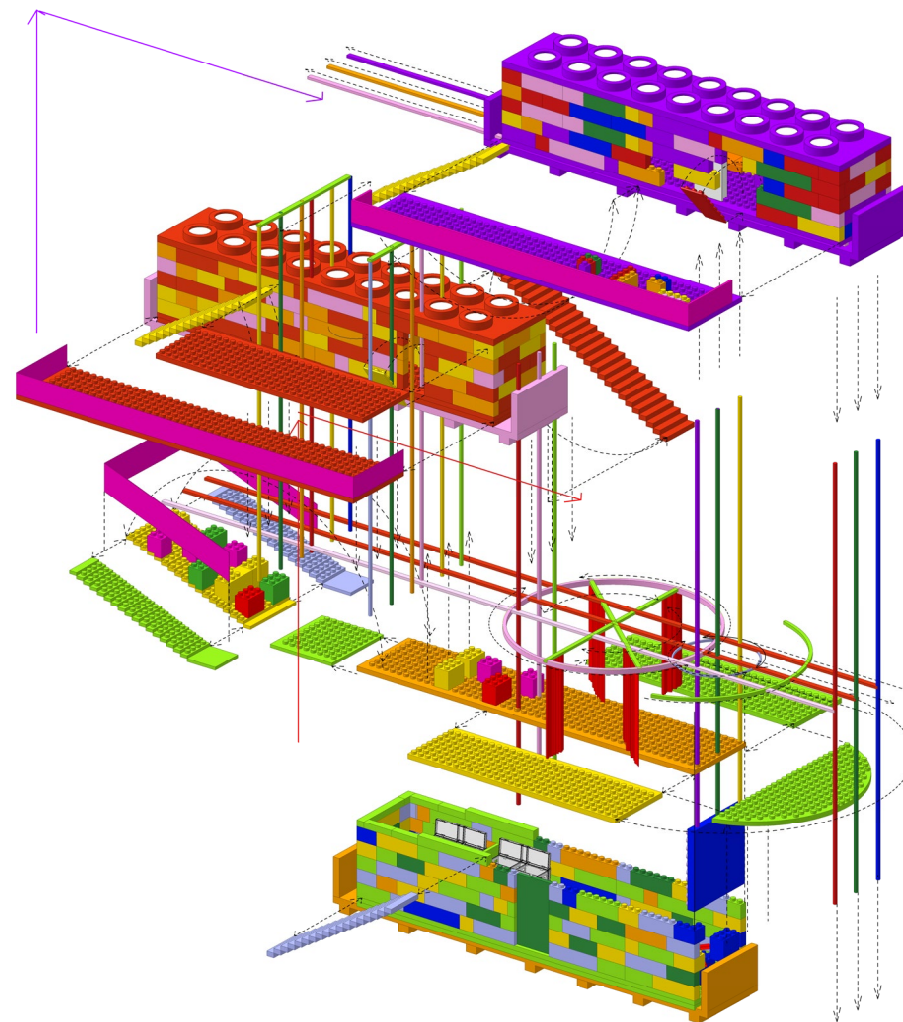
02 SHOW MUST GO ON

The task of the competition was to present a project concept of a mobile container show complex - a mobile complex of folding equipment that assists small artistic groups' transportation around the automobile roads of the region in the warm season.

The task scope included Block A Stage, a folding stage construction to cover the visitors from the bad weather and move the stage equipment. Household Block B was the catering unit to eat with a built-in kitchen and food storage, an office, a dressing room, and sanitary space. Residential Block C consisted of eight beds, storage devices for stage costumes and personal belongings, a dressing room, and a sanitary unit.

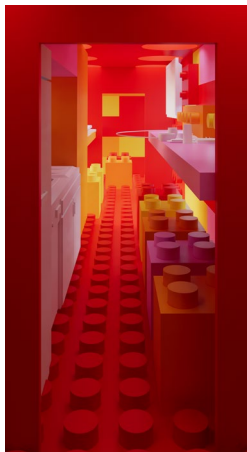
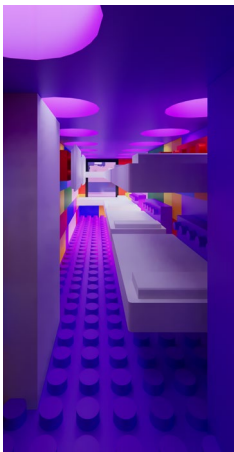
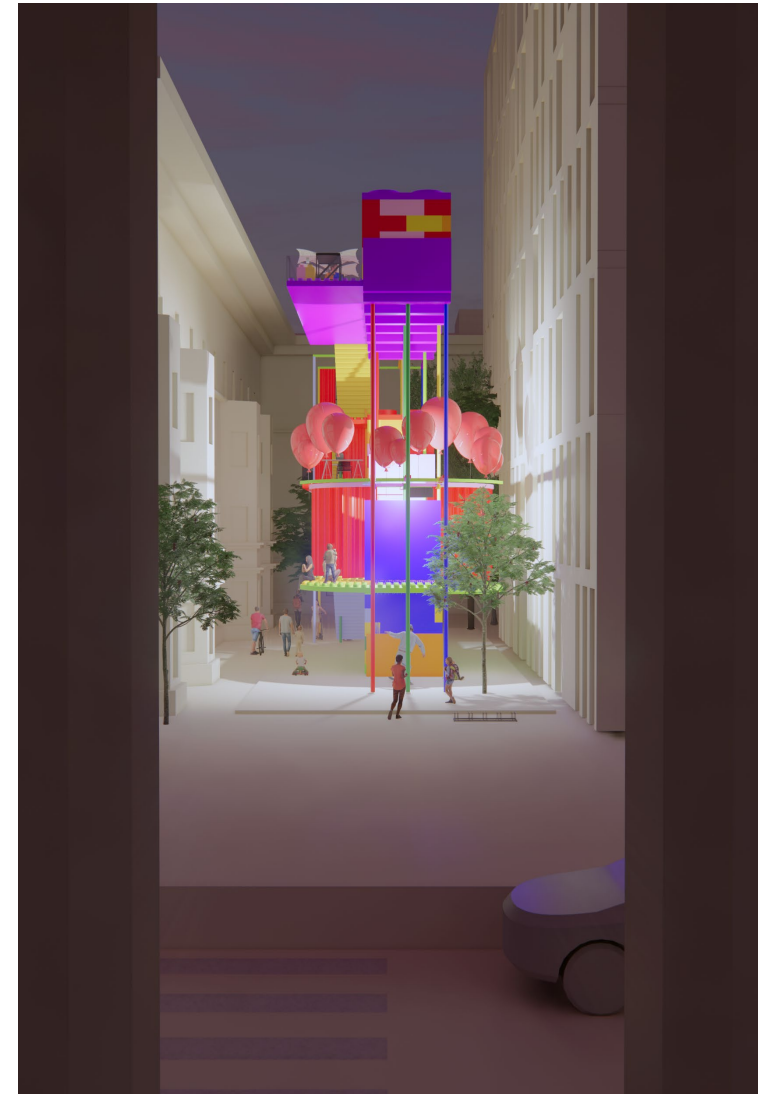
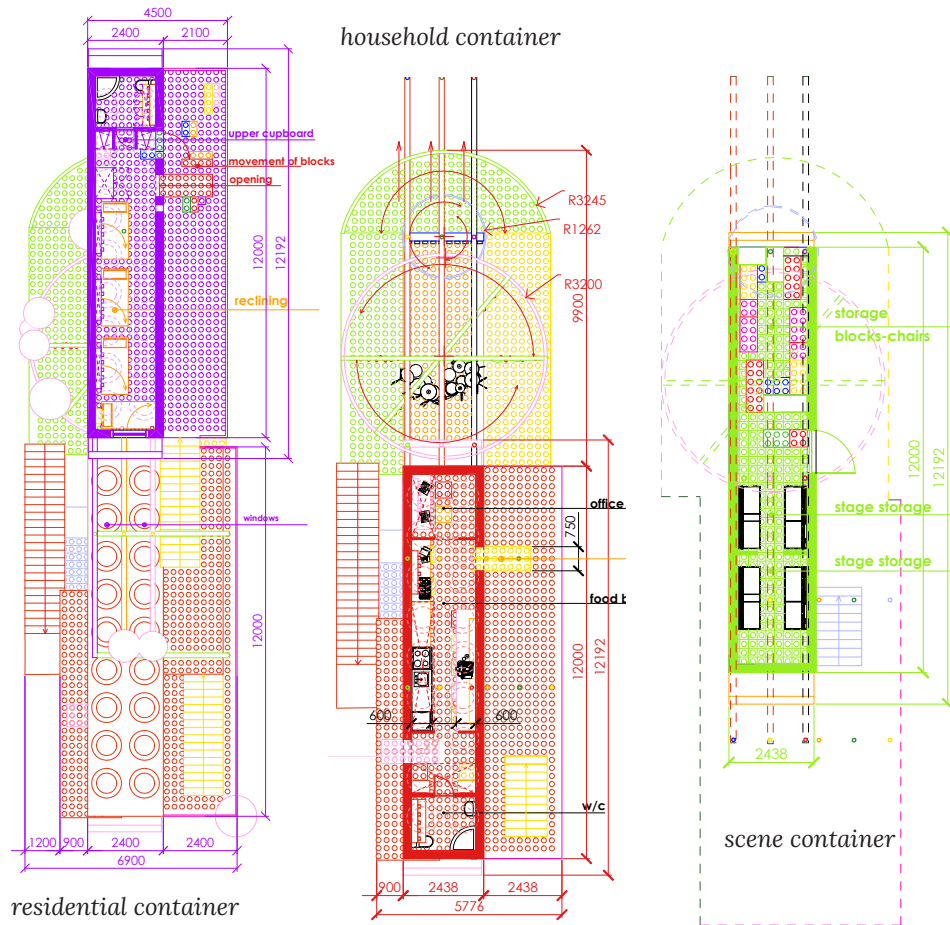
The concept of the presented LEGO SHOW complex was to return to childhood, where everyone enjoyed the colorful and exciting design. This project was an adult scale of the childhood dream with container constructors straight from childhood.

The shape of the container repeated the small LEGO pieces. Not only would every child want to be on the show, but the adult would want to be a child again. The entire system was made entirely of large-scale LEGO building blocks. Due to the vertical arrangement of the blocks, the complex could be located in every yard and block. The place could be employed as a marketplace for teams. One could choose a set of construction kits and parts to be included there as well as the colors that matched the show's theme or the team's flag.





All shows are held on the stage, in the amphitheater, and on the stairs. The top blocks are open to the staff only and could be used during the performance. Therefore, people not performing on that night can enjoy their time from the top levels of the containers.



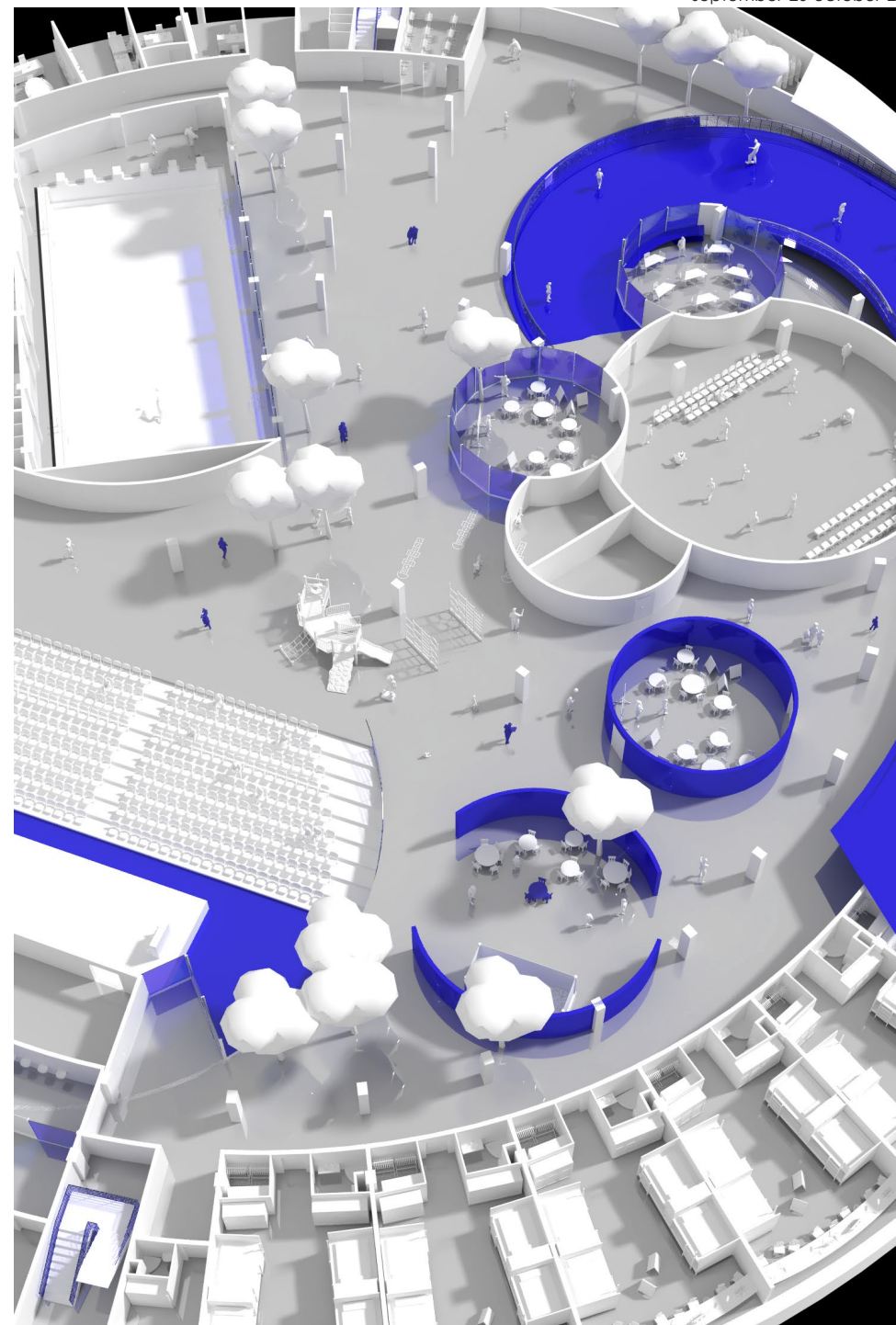
04 PEOPLE FROM «THE DATA RED BOOK»

The fact is that social services in the northern regions of our planet are a challenging task: severe climate, corruption, social injustice and indifferent attitude toward the locals, high costs, and many other factors that create hardships for students in their pursuit of high-quality education.

The people of the north are influential members of the global community. Many still preserve their nomadic customs and move across the tundra for deer farming and fishing. They have settings located, however, in remote areas.

The school project is a small town where children from all districts are brought by helicopters for the whole year. This practice is relatively common in the tundra - to fly the settlers, collect students for the next academic year, and then bring them back to their families for summers.

The school's primary mission is to grant children an opportunity to receive a good education and revive their cultures. Moreover, the project creates additional workplaces for teachers who graduated from indigenous people-related programs worldwide. The school is a home for extra activities in folk dancing, theoretical fishing, and deer farming, the culture of the northern ethnoses.



INDIGENOUS PEOPLE OF THE TAIMYR REGION



Nganasans
approx. 800 people
Ust-Avam,
Volochnanka



Ents
about 160 people
Vorontsovo,
Potapovo, Ust-Avam



Dolgans
5500 people
Khanty lake,
Volochnanka, Ust-Avam



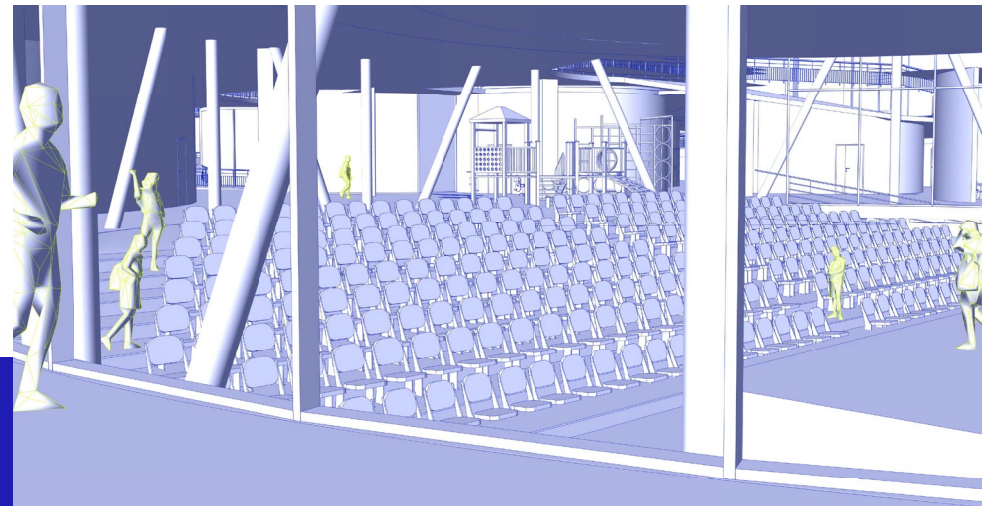
Evenki
approx. 300 people
Khanty lake, Potapovo



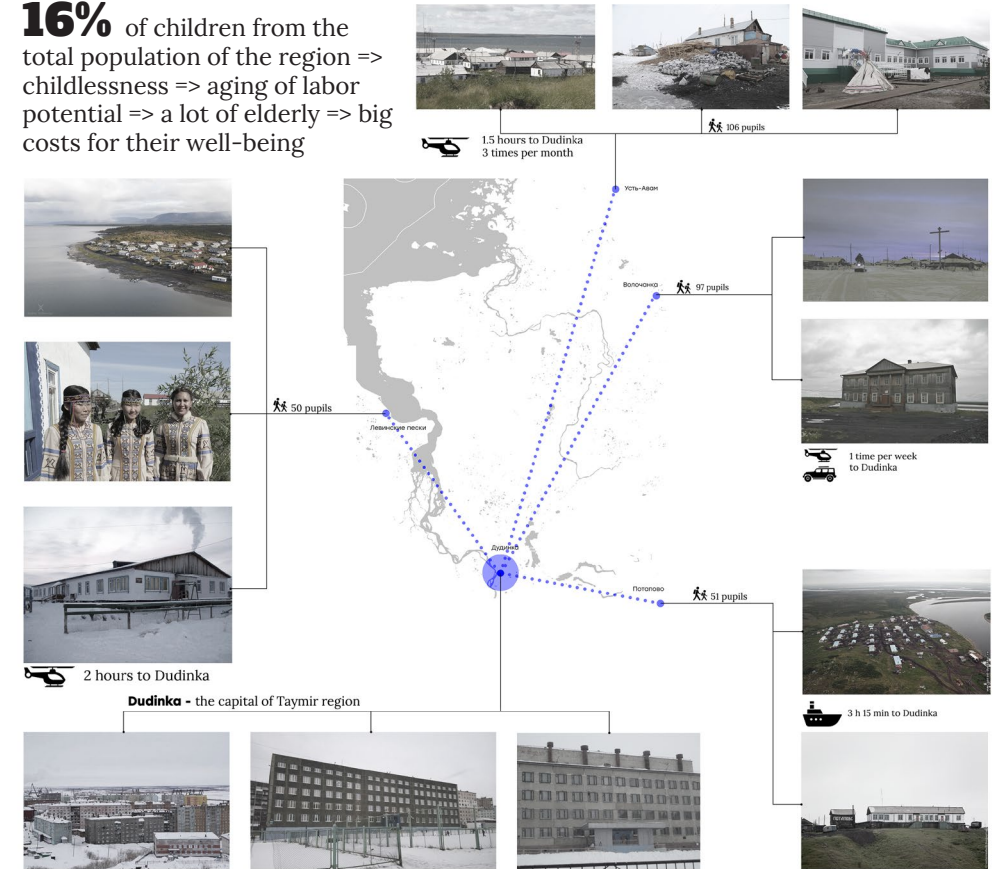
Chum
approx. 1200 people
Levinsky sands,
Volochnanka



Nenets
about 3500 people
district Guard



16% of children from the total population of the region => childlessness => aging of labor potential => a lot of elderly => big costs for their well-being



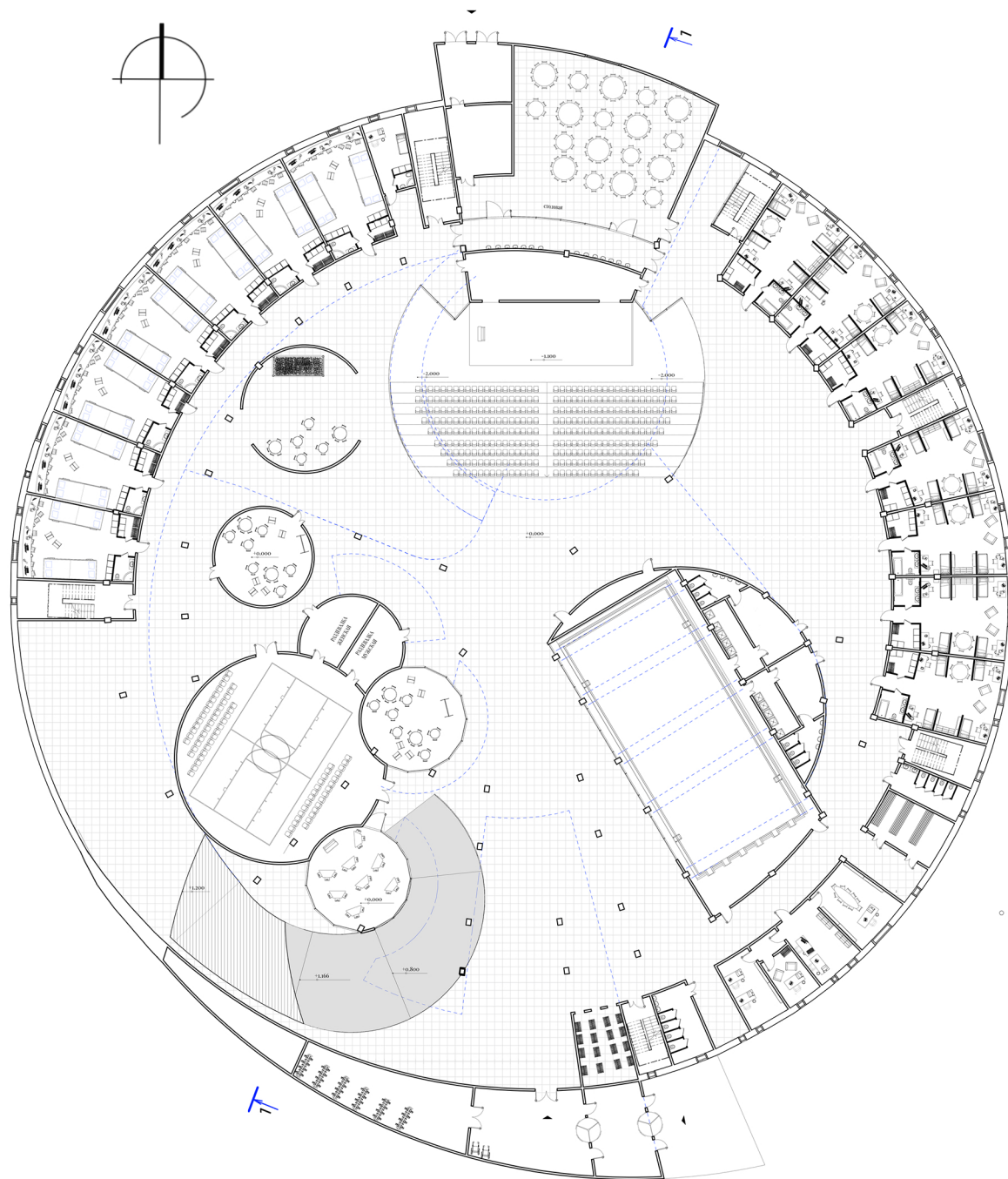
reindeer husbandry



fishing



furs



plan +0.000

d svintsova

*lack of education *alcoholism *premature mortality



Отсутствие
Образования



Потребности
с Алкоголизмом



Ранняя Смерть
наследия

*lack of schools



*population extinction

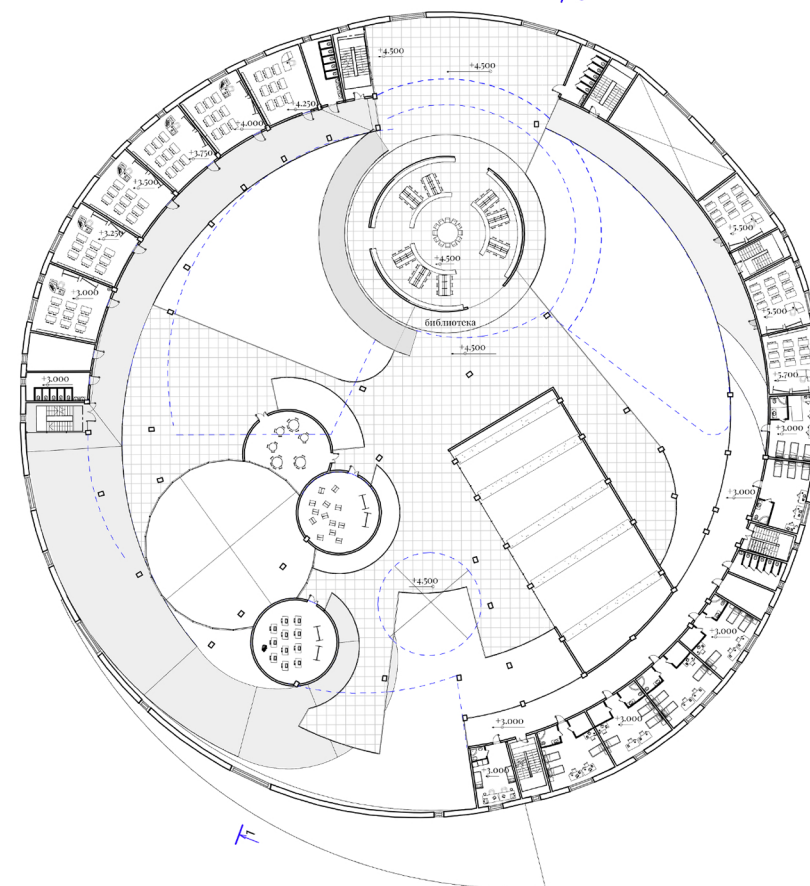
ДЕТЕЙ ВСЕ МЕНЬШЕ.



НАРОД ВЫМЫРАЕТ.



ОЧЕНЬ ТЕМНО.
*night all year round



plan +4.500



The school building located on the top of the hill has a round-shaped plan and smooth edges. This form is chosen deliberately to protect the school from the wind and the snow. The wind stream passes through the building, not creating drafts inside the school. The second constructive feature of the school is the massive piles immersed deep in the permafrost. The school's lighting makes the project stand out with the light-transparent constructions. The triplex windows and lanterns are inside the cover with a mounting for unique lamps that imitate the natural light even during the polar nights.

NEIGHBORS 04 ~~RELATIVES~~ ARE NOT CHOSEN

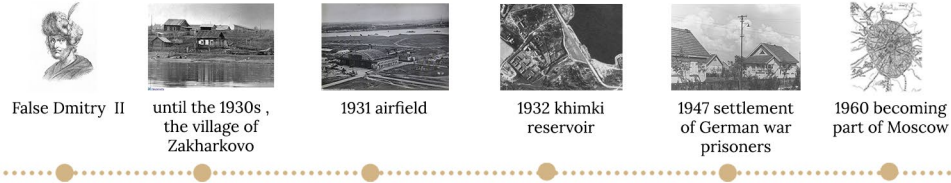
The renovation plan area is located in the ecologically clean and socially attractive district in the SZA of Moscow near the Skhodnenskaya subway station. However, there are some «black» spots in this friendly neighborhood. This place has its history. First, the criminal reputation is impacted by the quality of street lights and the number of stores in buildings. The lack of neighboring bonds adds to the crime rates.

The second problem is the difficulty in pedestrian routes as people have to walk from the subway through the dark yards. Thanks to the renovation system of the Moscow districts, the concept of urban blocks and cohousing has been actively promoted. Classical urban blocks can include parking on the first and basement floors and parks on the top roofs. It has become possible to build a playground in every yard and set the city farms for the city dwellers to rent and for municipal use.

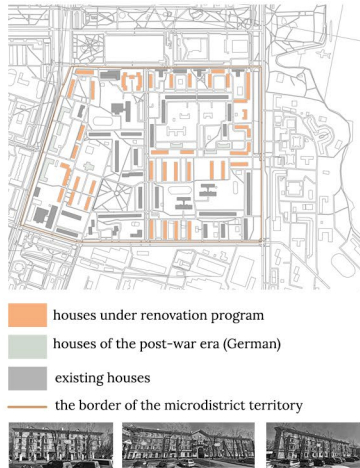
The concept means creating warm and cozy neighboring relations by promoting closed-up blocks with all premises to raise the trust among the dwellers. Other significant features include the barrier to protect the area from industrial emissions, comfortable and accessible public transport system, security, and cohousing for community bonds.



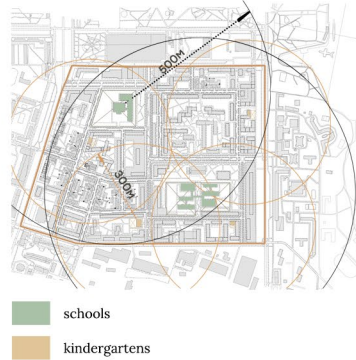
residential district



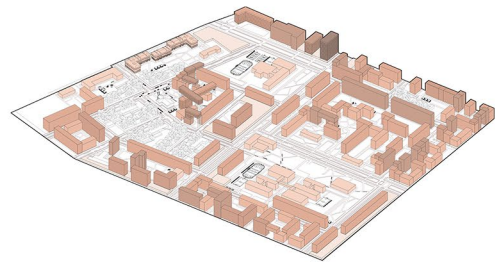
THE FUND OF HOUSES ON THE TERRITORY OF THE MICRODISTRICT BEFORE THE RENOVATION STAGE



THE SCHEME OF THE LOCATION OF SCHOOLS AND KINDERGARTENS



NUMBER OF FLOORS SCHEME



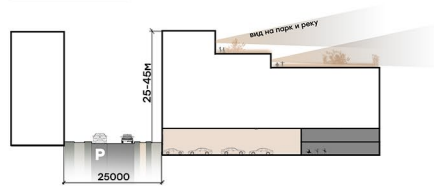
50-56 м	36-50 м	30-36 м	24-30 м	16-24 м	9-15 м	платформы
15-18 эт.	11-15 эт.	9-11 эт.	7-9 эт.	5-7 эт.	3-5 эт.	(парковки, общ. помещения)

types of houses in existing buildings

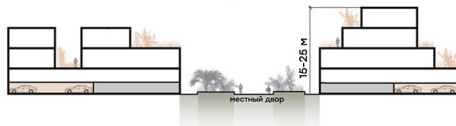


CROSS SECTIONS

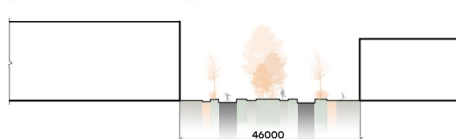
across the urban block with a view of the embankment



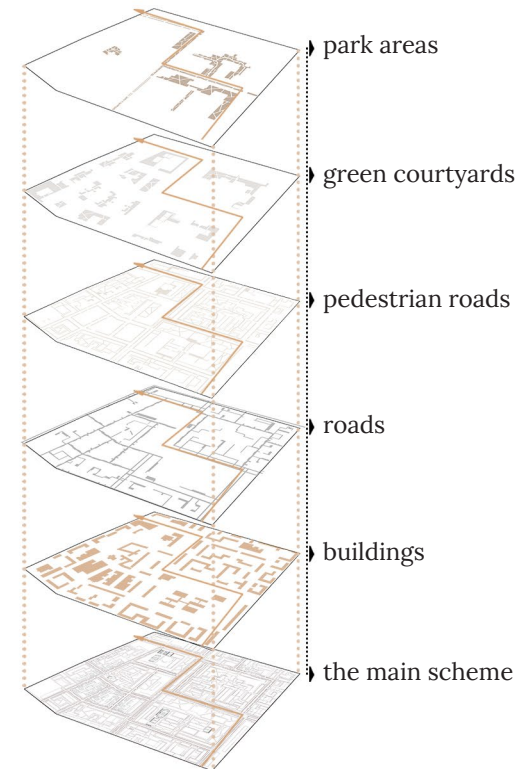
the section between the co-housing



the diameter of the main alley

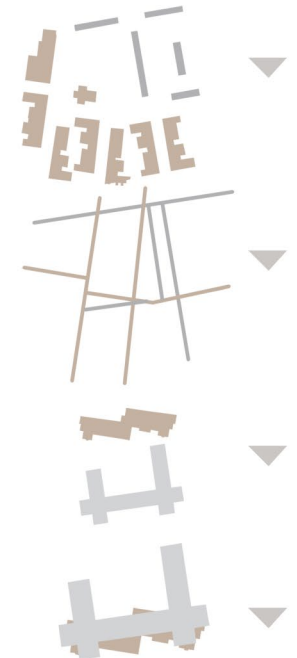


AXONOMETRIC SCHEME

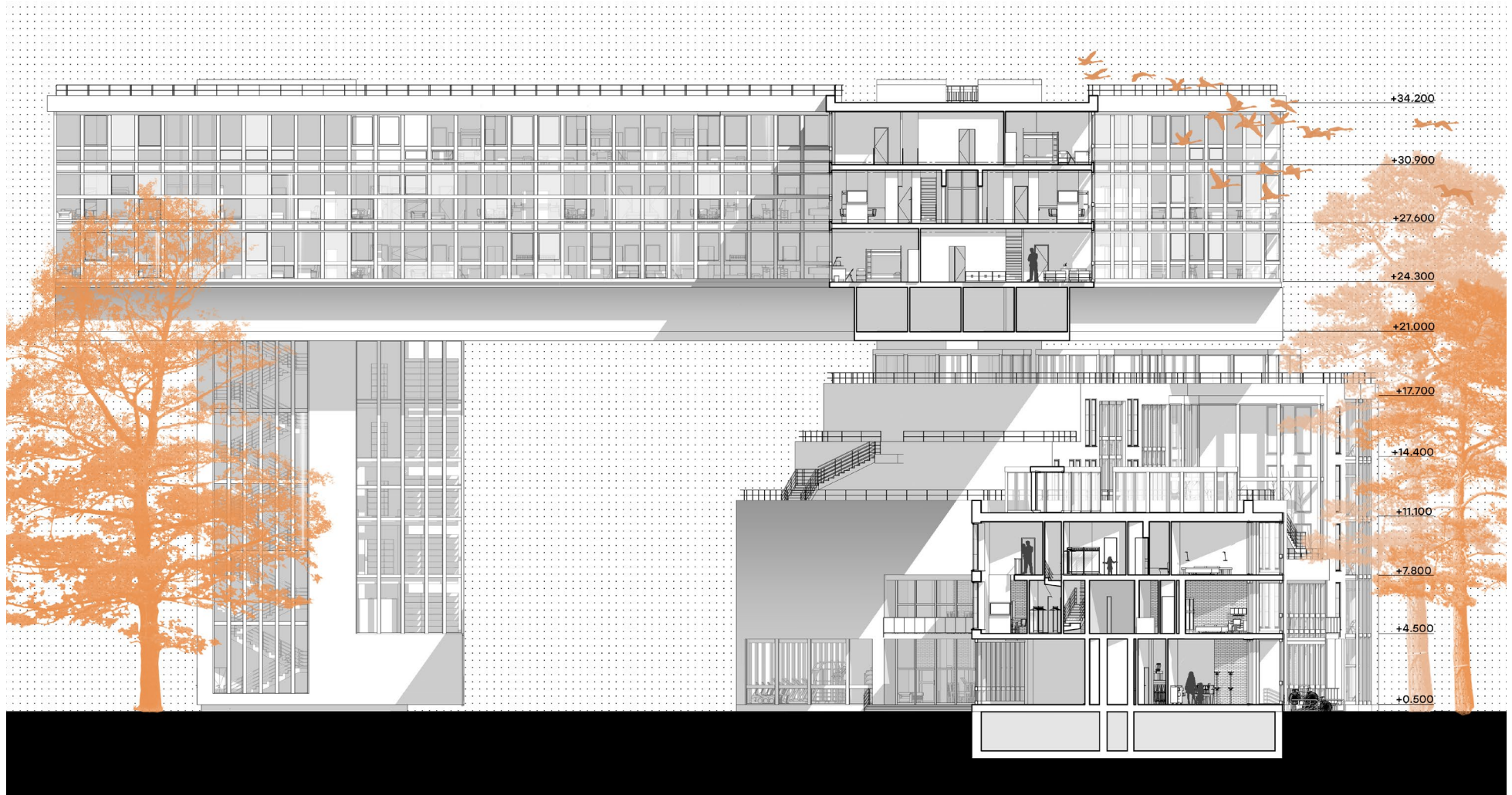


february'21-may'21

BUILDING SHAPING UNDER THE INFLUENCE OF URBAN PLANNING CHANGES



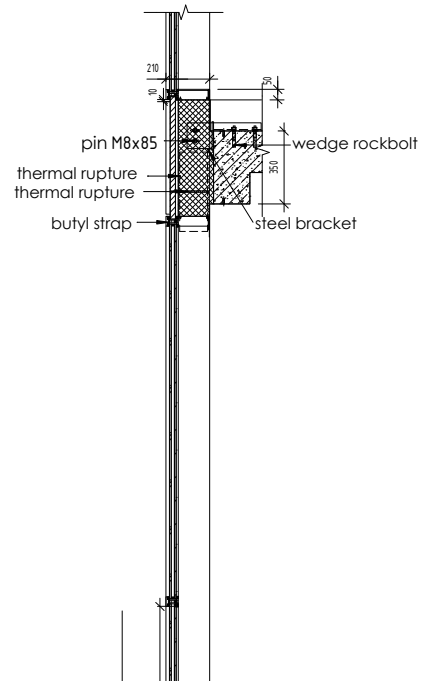
masterplan



The concept of the high-story dwelling building was in its architectural location. There are opposite types of construction around the site: massive panel dwelling houses with a single net and small block houses of cohousing type with a different net, and an ancient German cinema hall in the center. It is essential to highlight both nets. From a person's level, one can see a straight classical square supported by the construction on the ground divided into several parties. From the sky view, there is an entirely different picture - a massive body that holds the joint net of the micro-district that complements the whole composition.



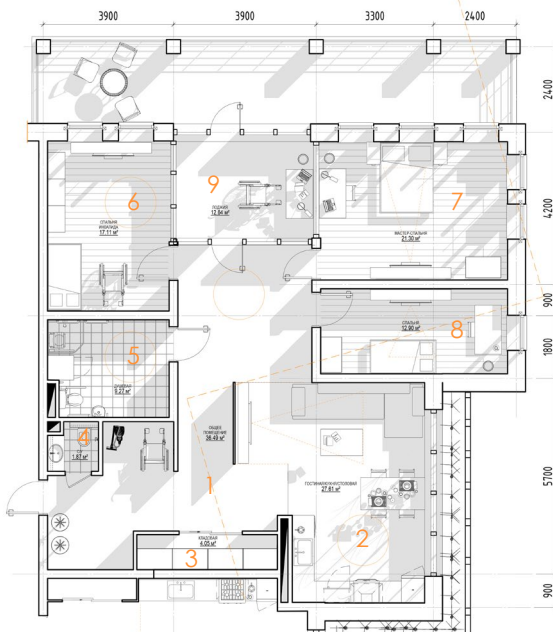
detailed part of the facade



facade's section



examples of urban farms



detailed plan of the apartment

1. HALL - 36.5 m²
2. KITCHEN/LIVING ROOM/DINING ROOM - 27.8 m²
3. PANTRY - 4 m²
4. W/C - 2 m²
5. MASTER W/C - 9.3 m²
6. DISABLED PERSON'S BEDROOM - 17 m²
7. MASTER BEDROOM - 21.3 m²
8. BEDROOM - 13 m²
9. LOGGIA - 12.6 m²

