

# ARCHITECTURAL PORTFOLIO

---

ANOUSHKA SETHI

SELECTED WORKS | 2017 - 2023

# CONTENTS

## ACADEMIC PROJECTS

NIDC	01
INSTITUTIONAL STUDIO, SEM V	
NEHRUNAGAR HOUSING	04
HOUSING STUDIO, SEM IV	
ARAS PARAS	07
MATERIAL STUDIO, SEM III	
LEARNING CENTER FOR THE VISUALLY IMPAIRED	10
DESIGN THESIS, SEM IX	
MISC ACADEMIC WORKS	13
SEM I - SEM VI	
INTERNSHIP PROJECTS	16
SEM VIII	

## PROFESSIONAL PROJECTS

H MODI	19
RESIDENTIAL, 2023	
K SHAH	21
RESIDENTIAL, 2023	

## PERSONAL PROJECTS

RHINO AND RENDERING EXPLORATIONS	23
2022	

# THE NATIONAL INSTITUTE OF DESIGN AND CRAFTS

---

Educational Institute, 2019  
Location - Udaipur, Rajasthan  
Site Area - 7763 sq.m  
Materials - Concrete with Brick infill  
Mediums - AutoCad, Revit,  
Photoshop

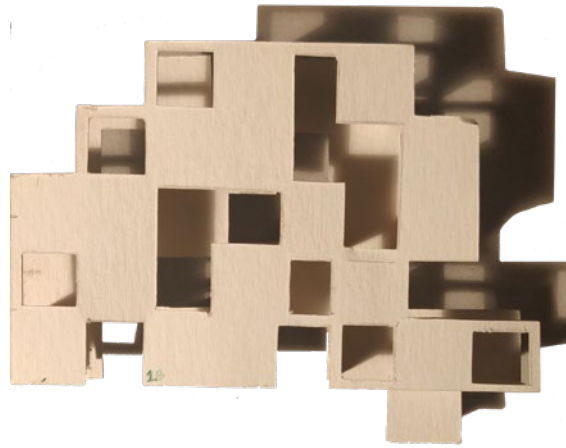


Located in the Shilpgram Crafts Village in Udaipur, the National Institute of Design and Crafts caters students studying traditional crafts like Ceramic, Terracota, and Stone works along with Printing and Painting.

With trees all around and within, the institute is anchored in nature. It is designed in a way so that the learning is not restricted by walls of the classroom. The spaces are porous and located along the periphery. They are not bounded by walls and open up in the central common spaces - the corridors and courtyards as well as out in the site.

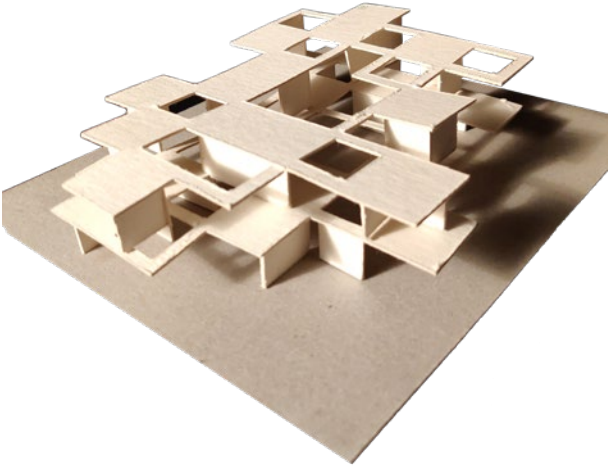
All of the interactive spaces including the Shalas (workshops), labs, and cafes are on the Ground Floor whereas the more private and quiet spaces - the Kakshas (studios) are on the First Floor.





CONCEPTUAL MODEL

The 3m\*3m grid acts as a constant while the organic form provides flexibility for growth and future expansion.

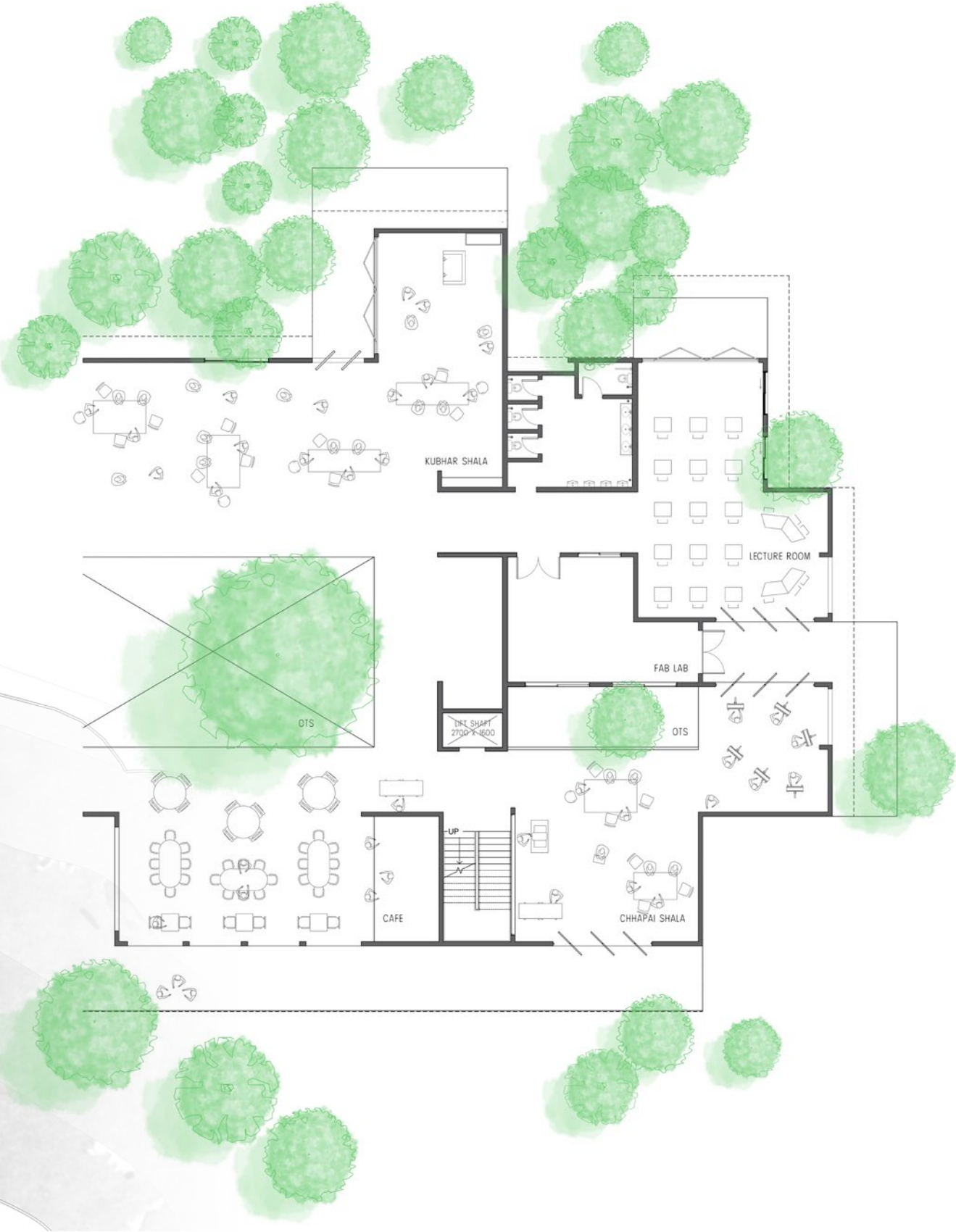


CONCEPTUAL MODEL

The institute is porous, as it has multiple openings in the vertical as well as the horizontal plane.

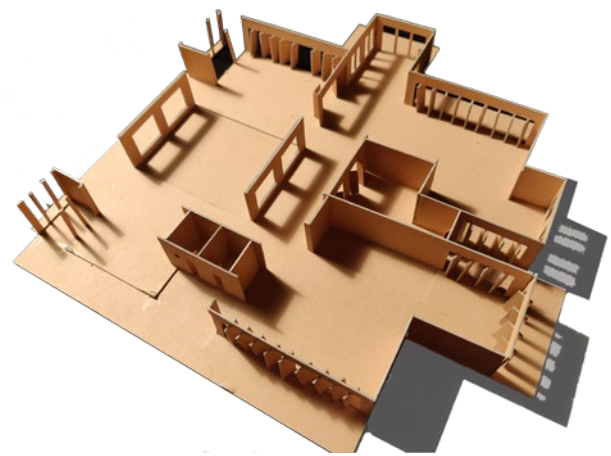


GROUND FLOOR PLAN



PART PLAN





PART MODEL



PROCESS MODEL



SECTIONAL PERSPECTIVE



EXTERNAL VIEW



SECTION



SECTION



## NEHRUNAGAR HOUSING

---

Housing, 2019  
Location - Nehrunagar, Ahmedabad  
Site Area - 5740 sq.m  
Materials - Concrete with Brick infill  
Mediums - AutoCad, Rhino, Revit,  
Photoshop



SECTIONAL PERSPECTIVE

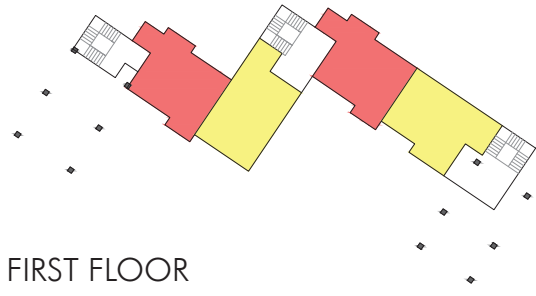
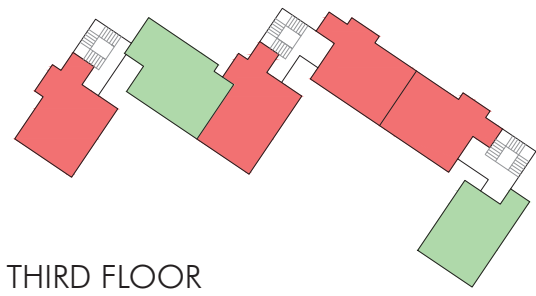
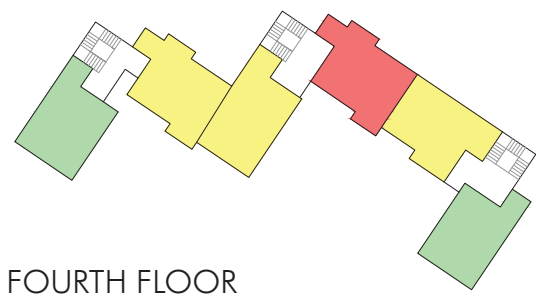
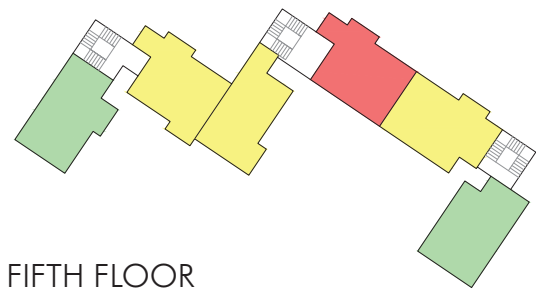
Situated in the L Colony, Nehrunagar, Ahmedabad the housing is designed to accommodate 70 Small, Medium and Large sized residential units. The units are narrow and 7000 mm wide to create a easy flow of wind though the cross section and also bring in daylight from both sides that filled the entire unit.

Common amenities like Gym, Home Theater etc. have been provided on the ground floor along with commercial shops (along the external road). The medium and large sized units are duplexes with the provision of public spaces on the lower level and private spaces like bedrooms on the upper level.

Each unit is designed in a way that they all open up to a small common space that is created by the unit itself. These then further open up to larger central common open space which is shared by the entire Housing.



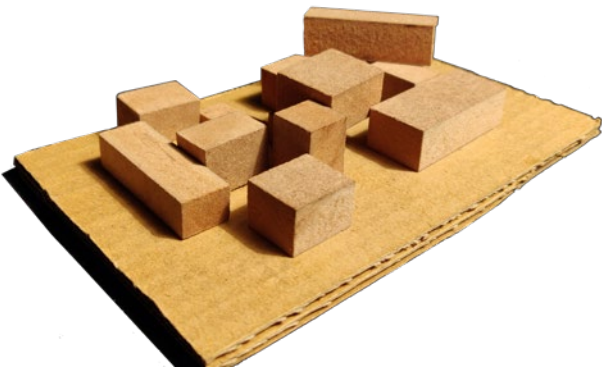
UNIT TYPOLOGY



The Red units are small apartments whereas the Yellow and Green ones are duplexes.

- LARGE UNIT (120-150 m<sup>2</sup>)
- MEDIUM UNIT (90-120 m<sup>2</sup>)
- SMALL UNIT (50-80 m<sup>2</sup>)

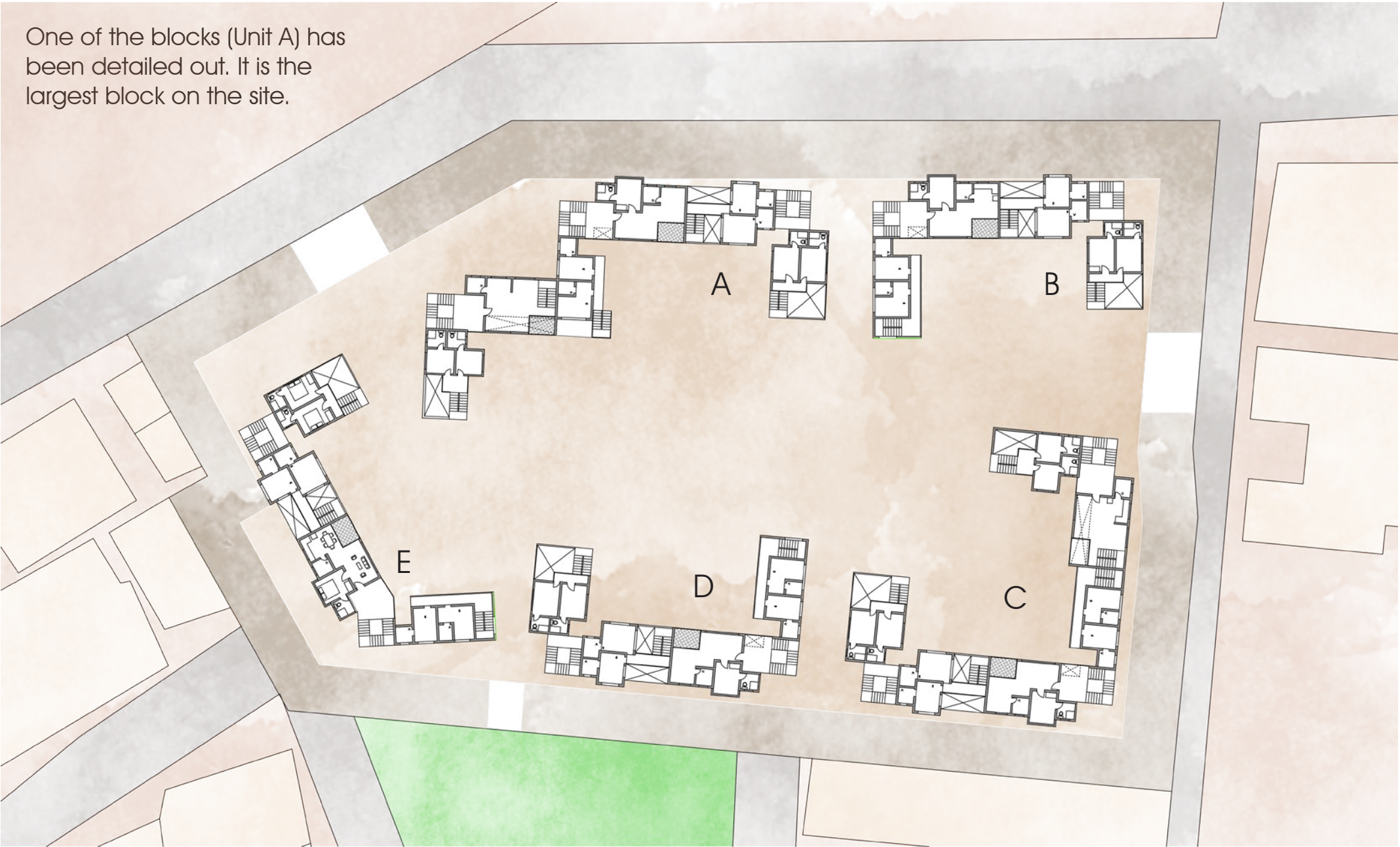
CONCEPT MODELS



Play of volume



Staggered floor plates create balconies and terraces

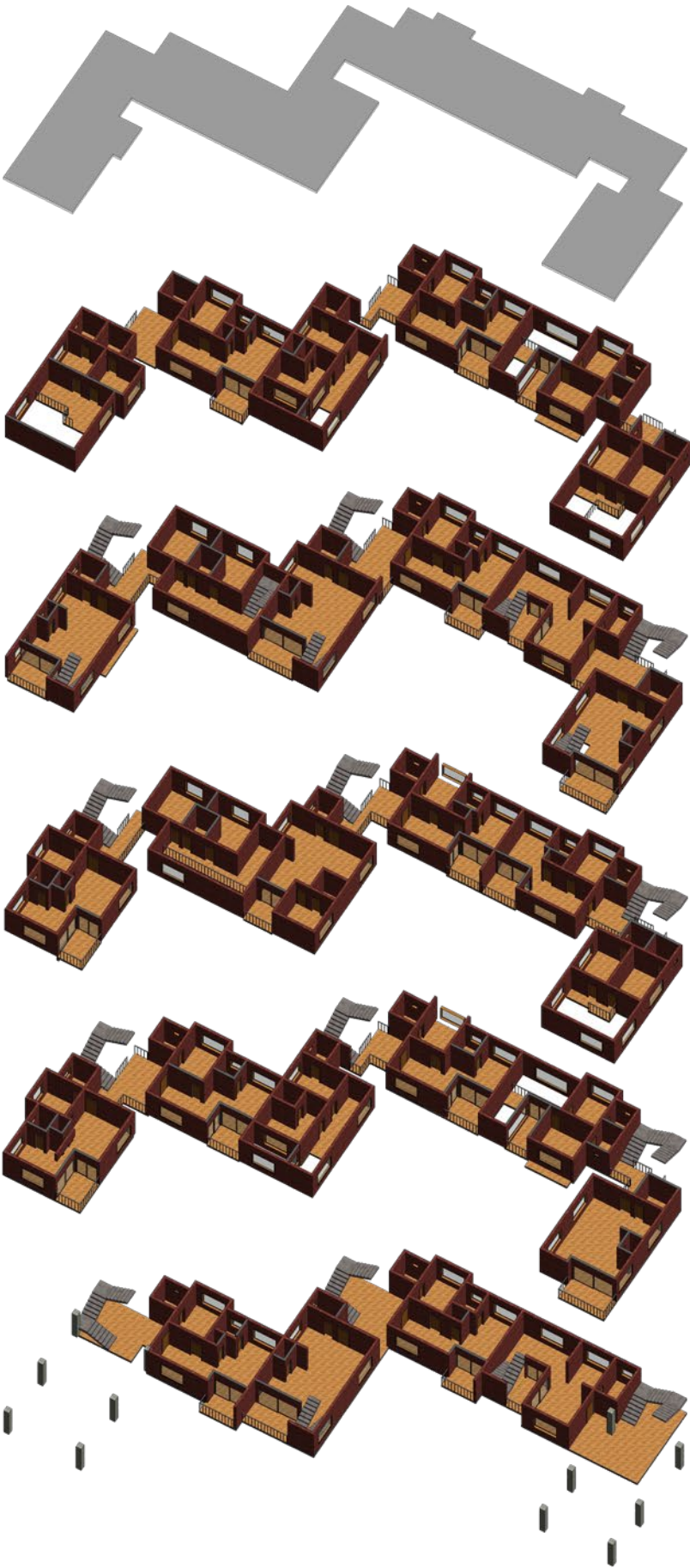


SECOND FLOOR PLAN ON SITE



EXPLODED VIEW OF UNIT A

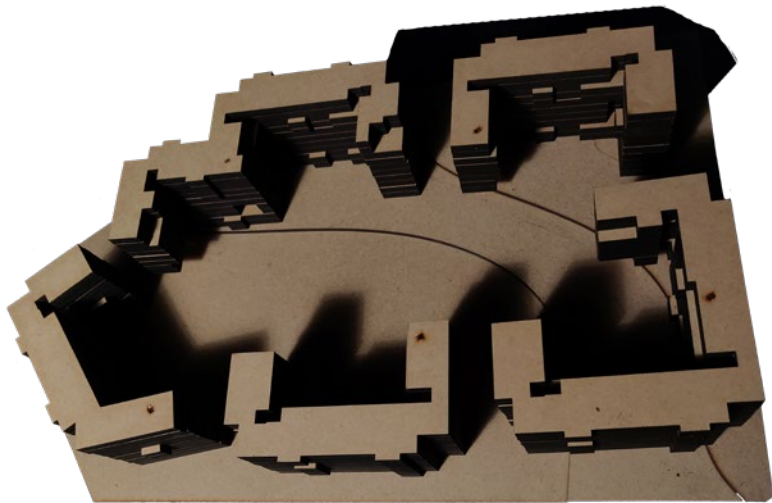
The staggered facade of units create small spaces within which act as balconies and terraces. Each unit is designed in a way that they all open up to a small common space that is created by the unit itself. These then further open up to larger central common open space which is shared by the entire Housing.



EXTERNAL VIEW FROM THE BACK



EXTERNAL VIEW FROM THE SIDE



ORIENTATION OF BLOCKS ON SITE

SECTIONS





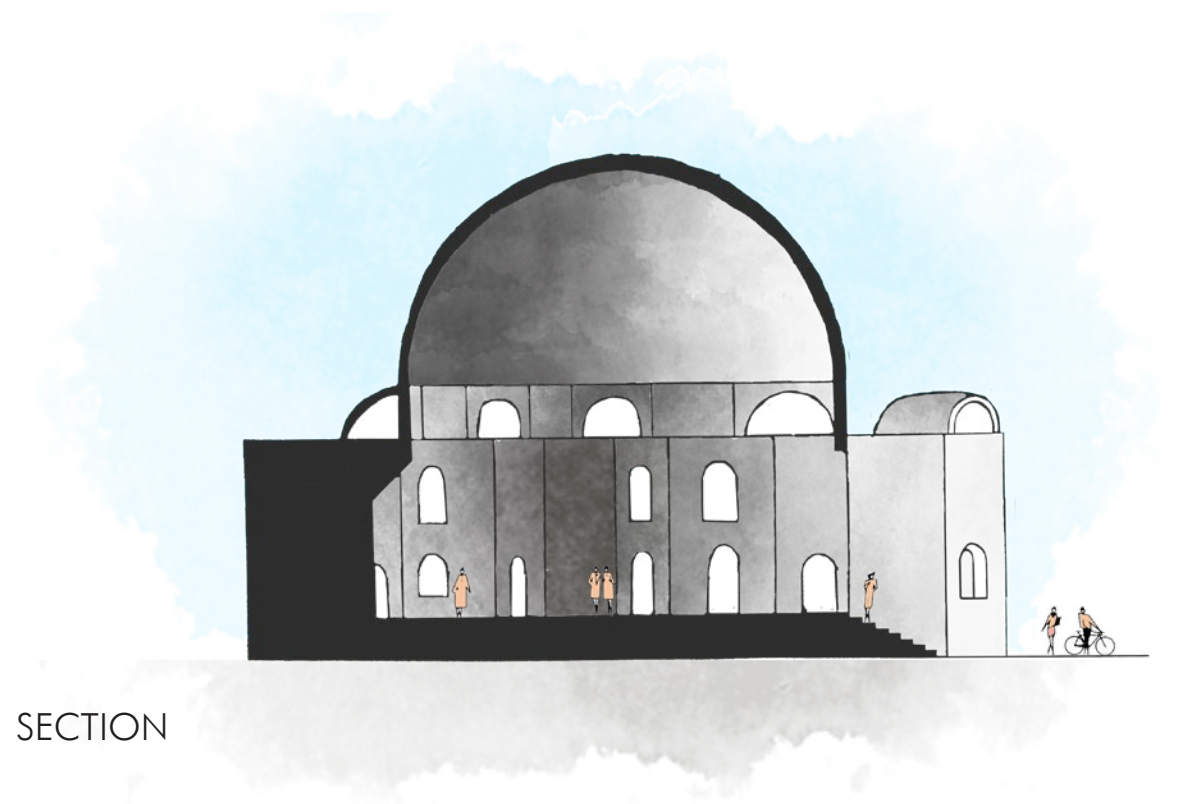
## ARAS PARAS

Structural and Material Studio, 2018

Location - Mandu, MP

Materials - Exposed Brick

Mediums - AutoCad, Sketchup,  
Lumion, Photoshop



### SECTION

Set in and inspired by the architecture of the historic city of Mandu, the pavilion, that houses a small institution, is made completely out of bricks. It covers an area of  $256\text{m}^2$  with a brick dome which acts as the central common discussion space.

The Dome is supported by 12 units, each having an area of  $16\text{m}^2$ , that help transfer the load to the ground. They are double storied unit with activities like, Admin, Canteen, Staffrooms, Common Rooms etc.

The units have been designed by the subtraction method and internal spaces are carved out of the unit.

The load of the Dome is transferred to the ring of arches below it which transfers it to the smaller domes and vaults that cover the units and then finally transfer the load to the ground via the thick walls.

PROCESS MODELS



INITIAL ATTEMPT TO UNDERSTAND  
LOAD TRANSFER



FINAL PART MODEL

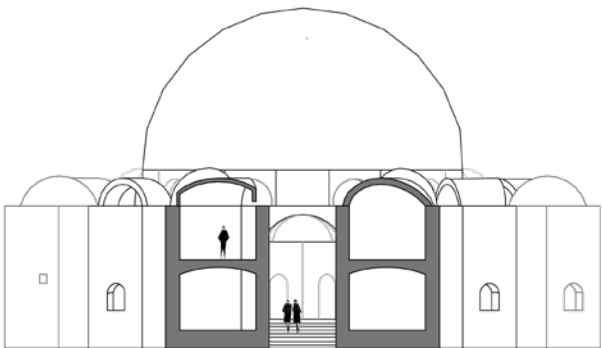


EXPLORING ORIENTATIONS  
OF 12 UNITS

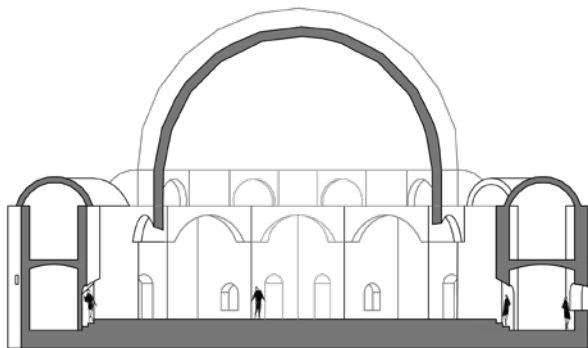


EXTERNAL VIEW

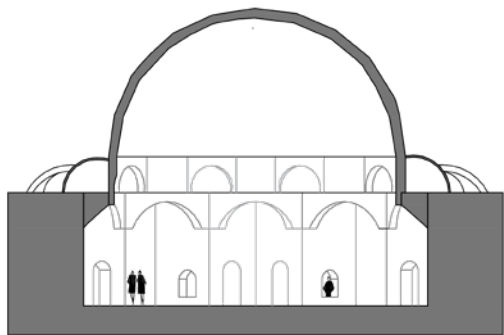
FINAL DRAWINGS



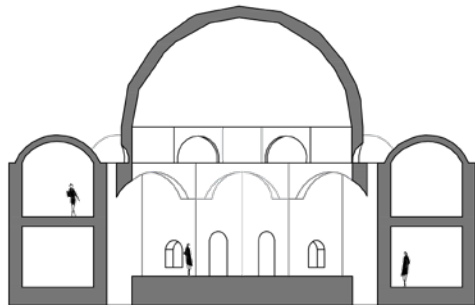
SECTION AA'



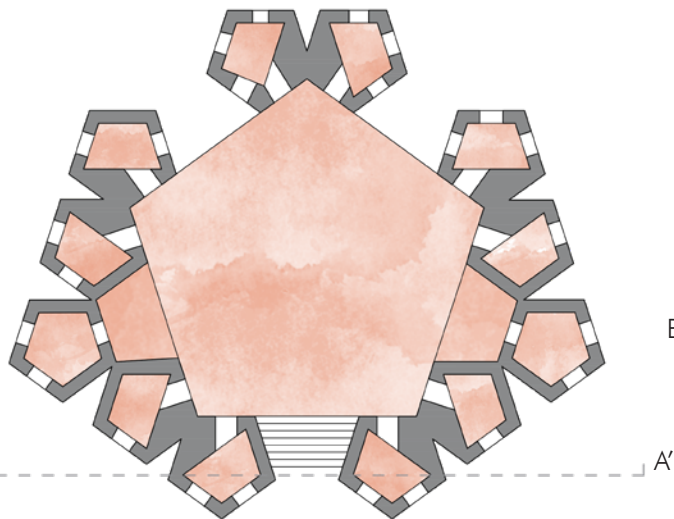
SECTION BB'



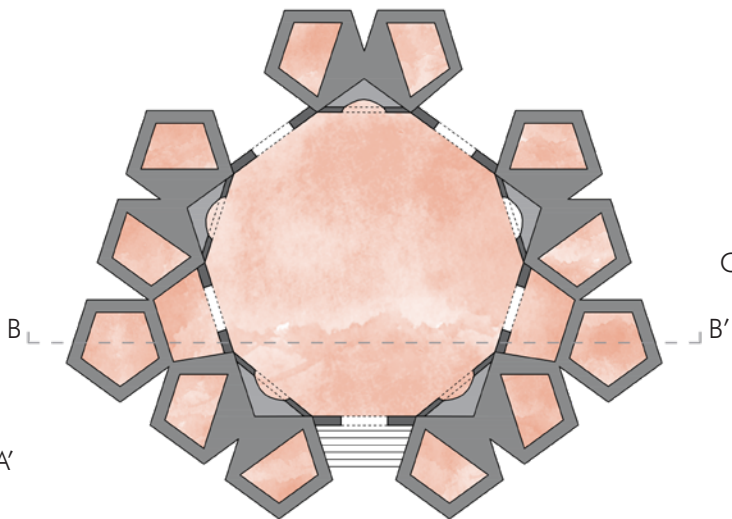
SECTION CC'



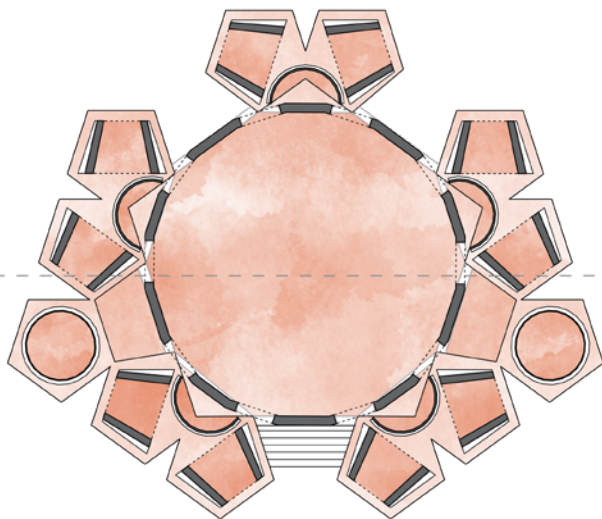
SECTION DD'



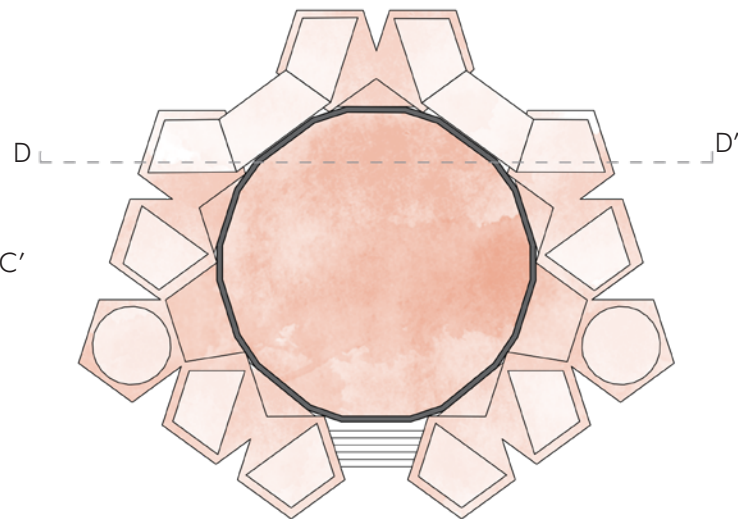
PLAN CUT AT 7500mm



PLAN CUT AT 8500mm



PLAN CUT AT 10000mm



PLAN CUT AT 15000mm





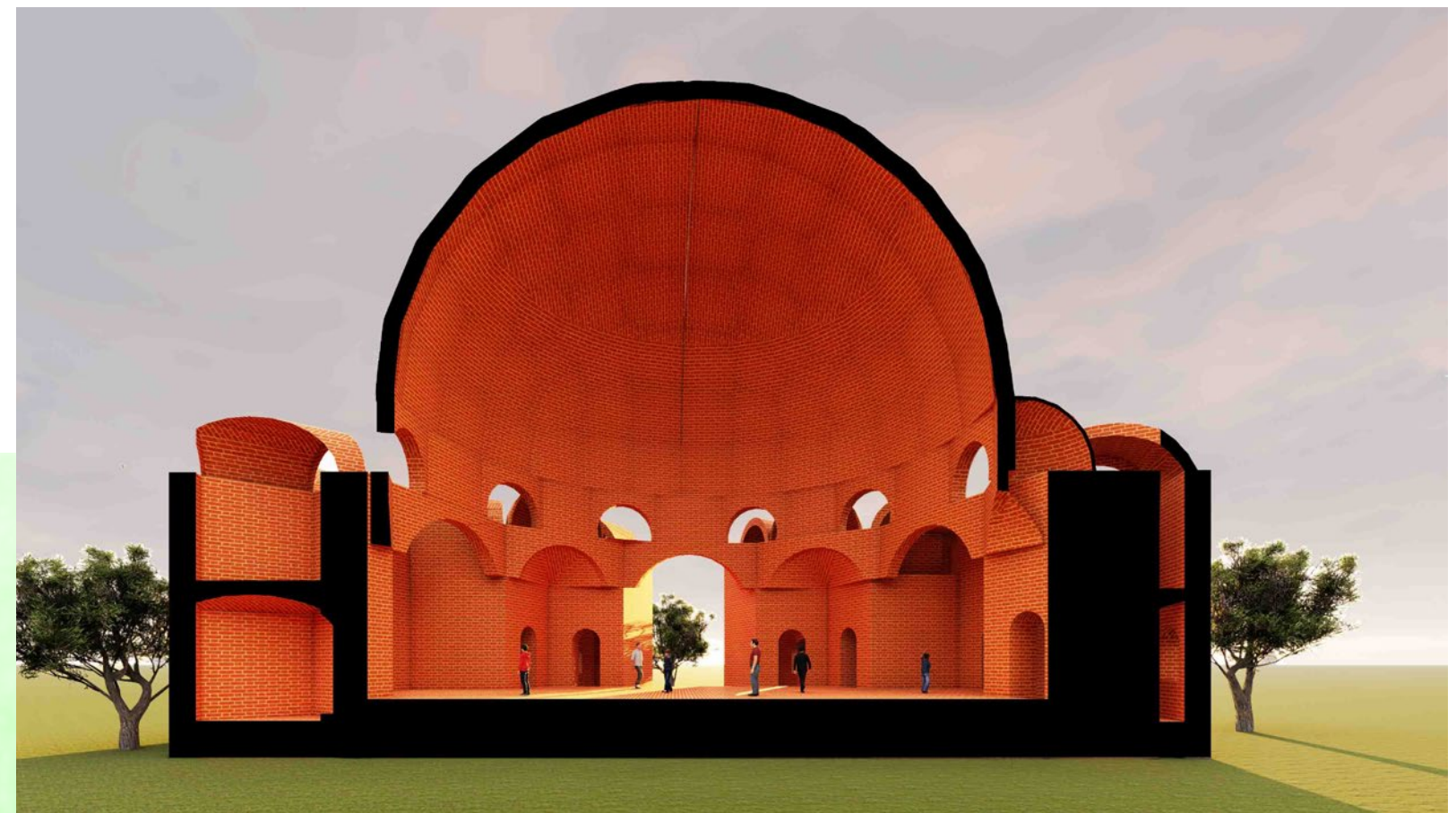


Spaces were created by carving out the clay from the model.  
(Subtraction Method)

CLAY MODEL OF ONE UNIT



EXTERNAL VIEW OF DOME AND VAULTS



SECTIONAL PERSPECTIVE



VIEW OF THE CENTRAL SPACE



# LEARNING CENTER FOR THE VISUALLY IMPAIRED

---

DESIGN THESIS - Educational Institute, 2021  
Location - Ahmedabad, Gujarat  
Site Area - 33313 sq.m  
Materials - Exposed Brick, Concrete, Timber, Metal  
Mediums - AutoCad, Sketchup, Lumion, Photoshop

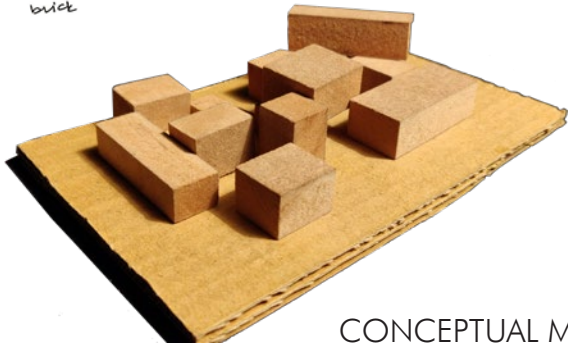
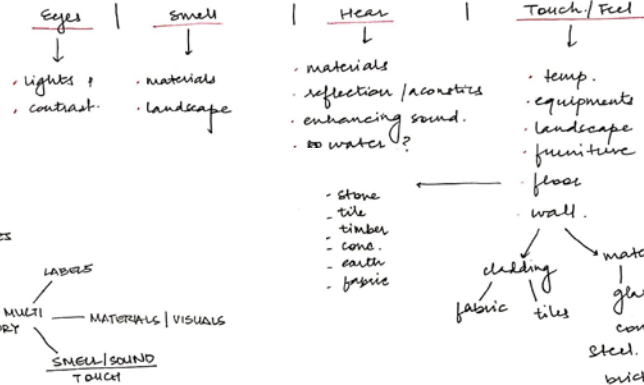
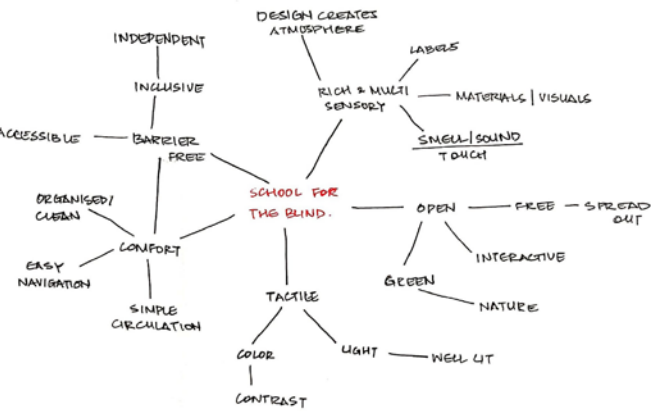


Set in Ahmedabad, the main objective of the institute is to create spaces for the blind and visually impaired with the purpose of not only providing them a good educational program and service, but also to provide them an integrated space, designed to that ensure their safety, confidence, and independence throughout the space by enhancing the design using sound, smell and touch sensorial built environment.

The buildings that are designed particularly for the visually impaired, acoustics and materials are of the utmost importance. The mix of different materials and acoustical features and incorporation of fragrance into the designs, help the visually impaired in understanding the spaces better. Designing barrier-free spaces and increasing natural lighting is also important as even individuals with vision impairment are also able to sight colors and lights slightly.

PROCESS

Need of Design = Center of Design.



CONCEPTUAL MODEL

RESEARCH KEY INFERENCES

ANDH JAL MANDAL EXPERIENCE

- Guidance helps (Rails, Tactile etc.)
- suffocating and enclosed
- Importance of other senses
- familiarity/ predictions

INTERVIEW

- Additional of Ramps, Tactile markings, railings.
- Some order in plans
- 1st experience is confusing but otherwise they remember
- Inside is okay, outside should be safe

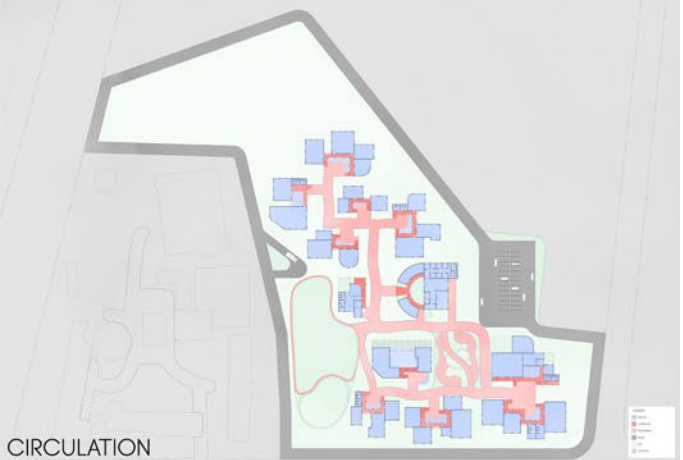
PRESENTATION PLANS



SPACES



TACTILE



CIRCULATION

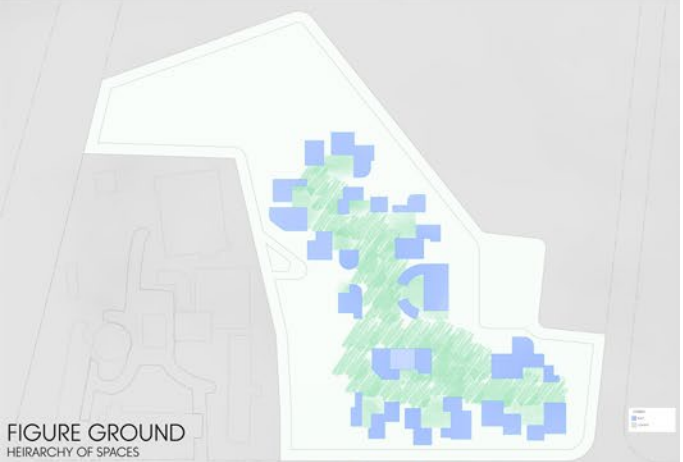
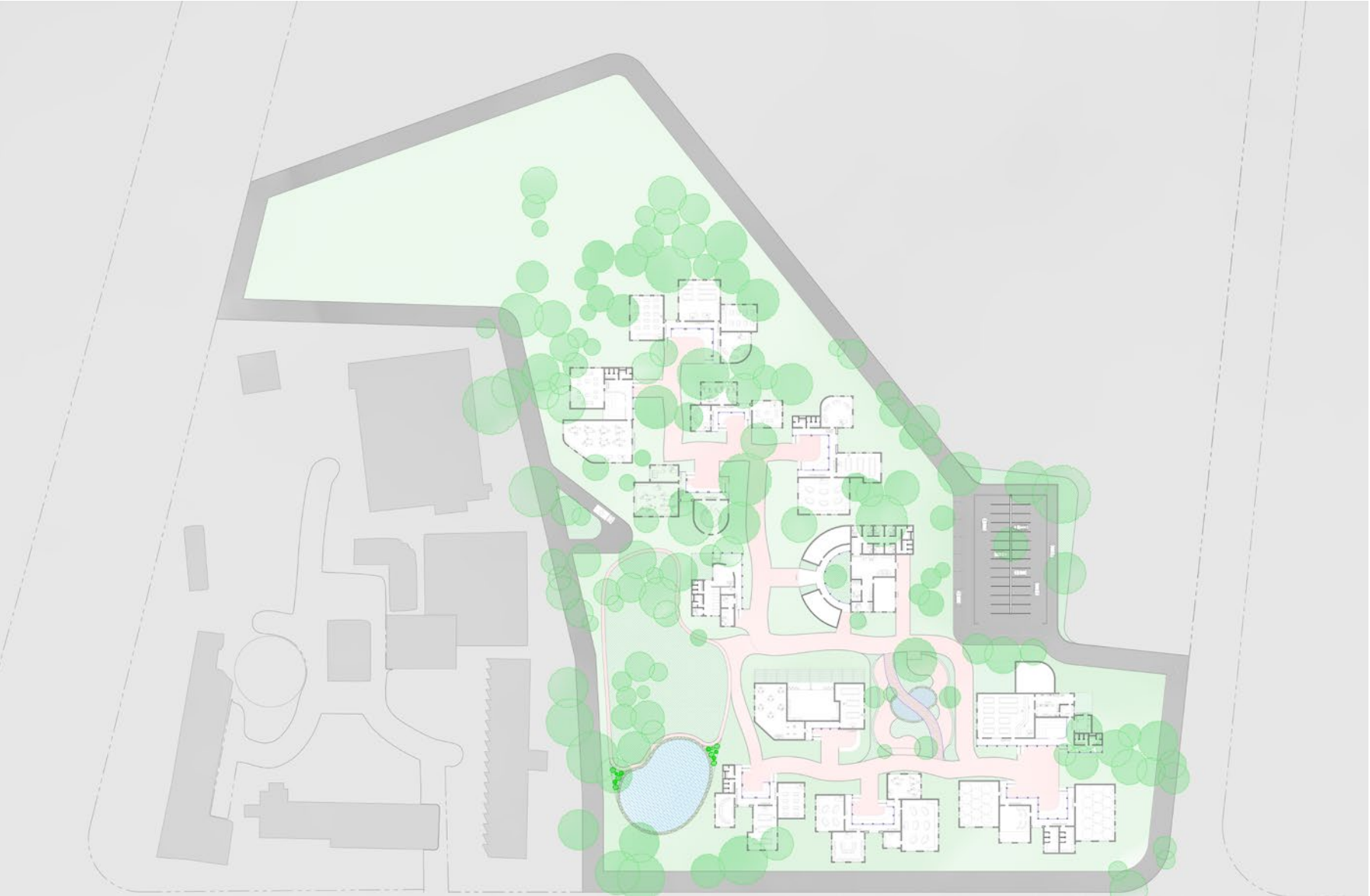
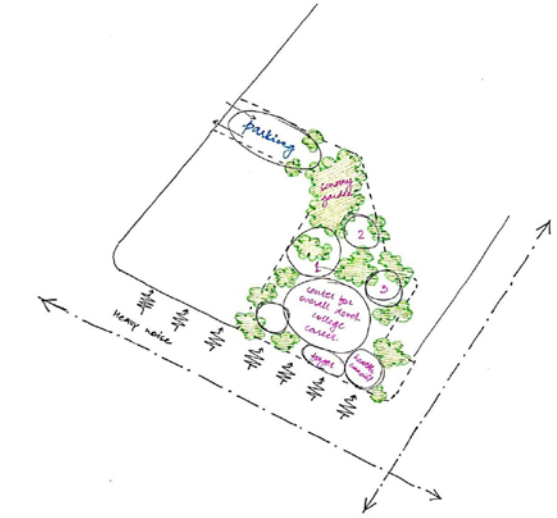


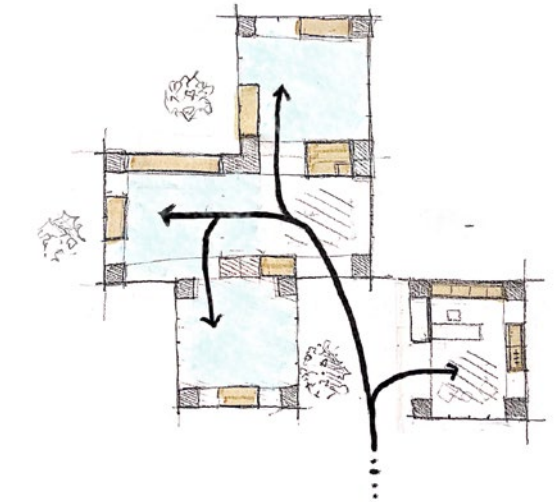
FIGURE GROUND  
HEIRARCHY OF SPACES



SITE PLAN



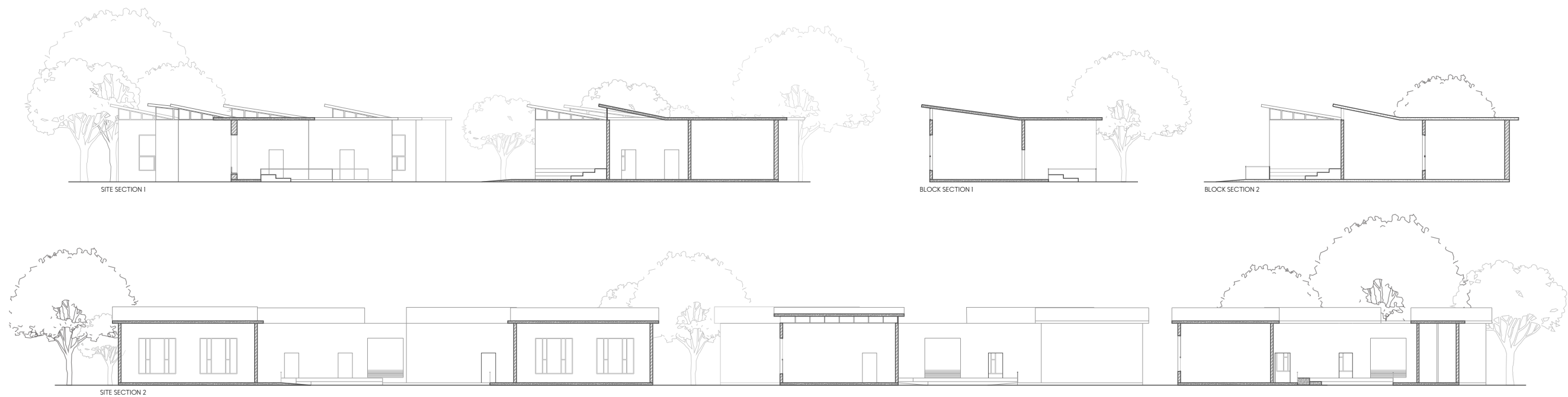
BASIC SITE ZONING



HEIRARCHY OF SPACES



SITE SECTION



MODEL VIEWS





## SEM I

### BUILDING CONSTRUCTION TECHNOLOGY

Other group members - Abhilasha, Chelsi, Shreya, Vikrant



This curved bench is made from Adobe bricks which were made from scratch along with the Mortar. The mud was pugged and set in oiled formworks made out of wood planks to make the bricks.

Finishing of the bench

## OTHER COLLEGE WORKS

- Sem I - Construction
- Sem II - Construction, Structure
- Sem II - Heritage Documentation
- Sem III - NSS, Environmental Services
- Sem IV - AGS, Structures
- Sem V - Furniture Design, Studio
- Sem VI - Bamboo Construction

In this section, selected works have been displayed that were done in the course of 5 years. These include models that were designed to develop a better understanding of structures, construction techniques, furniture design, environmental studies and other graphic skills, documentation and social work.

## SEM II

### BUILDING CONSTRUCTION TECHNOLOGY

Other group members - Chelsi, Devanshi, Mansi Jani, Shreya

This Parabolic Arch is made of bricks that were supported on a formwork of old, used bricks. Apparatus like Plumbob, Spirit level and threads were used to ensure uniformity and accuracy in construction.



Completed Arch

## STRUCTURES

Other group members - Chelsi, Devanshi, Siddhi



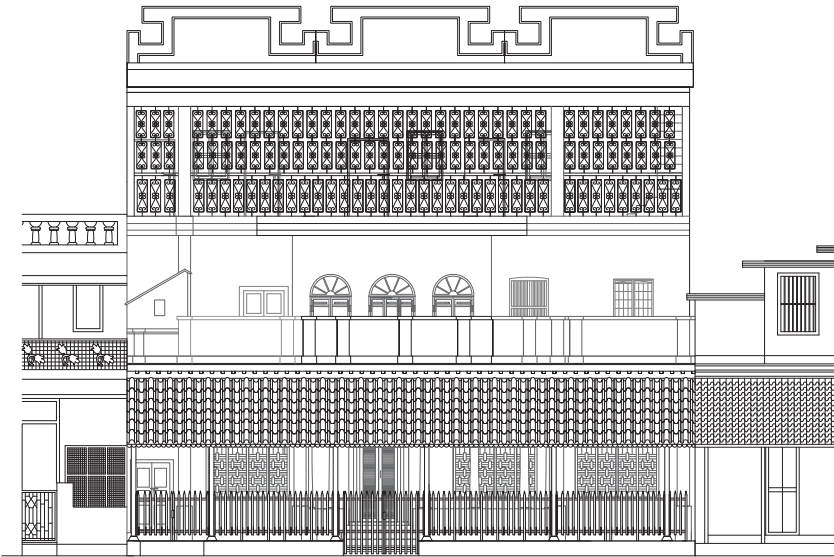
SECTION ACTIVE, FRAME  
Detailed model of The Crown Hall, Chicago, designed by Ar. Ludwig Mies van der Rohe.



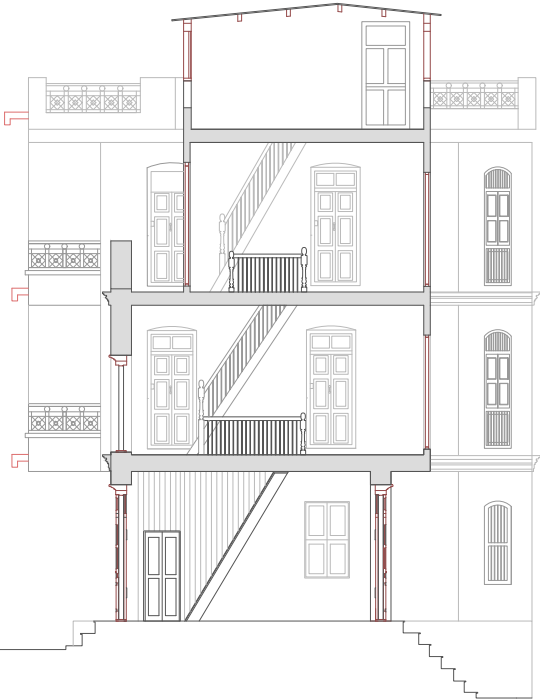
SEM II  
HERITAGE DOCUMENTATION

Other group members - Devanshi M, Rushiraj D, Saumil U

Study and measure drawing documentation of a house in the Tamil Quarters of Pondicherry and traditional a Pol house in the Dhal ni Pol, Ahmedabad.



Elevation of a Tamil House in Pondicherry



Section through a Pol House in Ahmedabad

SEM III  
NATIONAL SERVICE SCHEME (NSS) CAMP

Part of a team of 20

In the historic village of Dandi, public benches were made by resuing waste plastic water bottles filled with sand from the local beach along with Brick and mortar.



Completed Bench



Process



SEM III  
ENVIRONMENTAL SERVICES

Other group members - Chelsi, C Mansi C, Shreya G

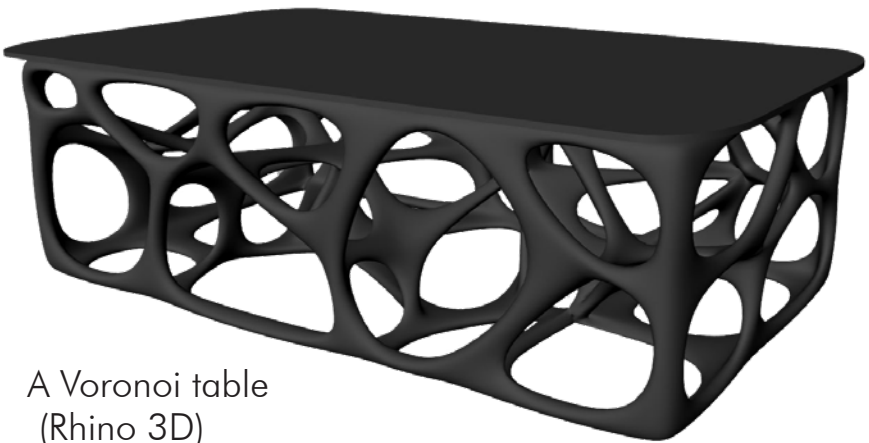
This small residence has been designed using multiple Passive techniques. Pitched roof has been provided which drain off the rainwater which is sent underground tank using pipes.

Central courtyard allows ample amount of sunlight and wind to easily enter all parts of the house. 'Chajjas' are used to stop harsh sunlight and rains from directly entering the house.



Model of the house

SEM III & IV  
ARCHITECTURAL GRAPHIC SKILLS



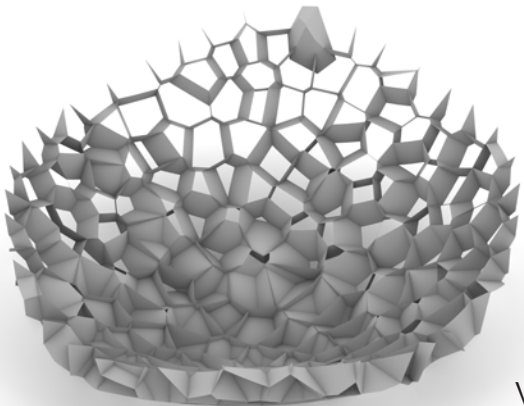
A Voronoi table  
(Rhino 3D)



A Lamp Set  
(Rhino 3D)



Loft Model  
(AutoCad + Slicer 360)



Voronoi Seating  
(Rhino 3D)



SEM IV  
STRUCTURES

Other group members - Chelsi C, Devanshi M, Hetvi J, Mayank K, Shreya G

SECTION V, RCC  
Detailed model of The Nordic pavilion, Venice, designed by Ar. Sverre Fehn.



VECTOR ACTIVE, STEEL  
Detailed model of The Mannheim National Theatre, Germany, designed by Ar. Ludwig Mies van der Rohe.

SEM V  
FURNITURE DESIGN & PAVILION DESIGN - STUDIO

Other group members - Chelsi C, Mansi C, Mayank K , Shreya G



Bench before weaving

These 2 wooden benches were made during a Furniture Design workshop, organised in Hunnarshala, Khamir. They were joint together using different variation Tongue and Groove Joinery.



Exhibition Pavilion

SEM VI  
BAMBOO DESIGN



Model superimposed at location

While the central courtyard (12m x 12m) is a great feature of the house, the harsh sunlight covers the 'chowk' through most parts of the day making it inconvenient for use. The pavilion would filter the right amount of sunlight in order to maintain the comfort of the users while keeping the courtyard open and ventilated.



Exploded isometric



View of the structure 15



## HIFI AUDIO SYSTEMS

### INTERNSHIP PROJECT AT SYNECTIC PARTNERS

Commercial Interiors, 2021

Location - Bangalore, Karnataka

Status : Completed

Clients : HiFi Audio

### WORK INPUTS

Conceptualisation, Design Development,  
Floor Plans, Sections 3D Modelling, Rendering, of  
Offices, Display Areas and all Home Theaters.  
Client meetings and presentations, Site Visits and  
coordinations, Detailed construction drawings, Vendor  
meetings and Material Selection.



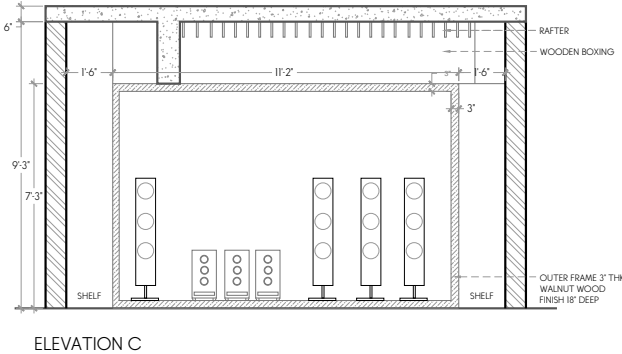
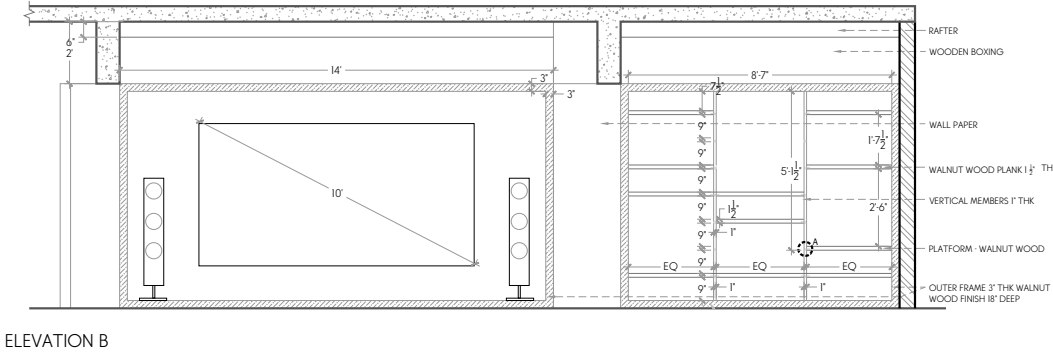
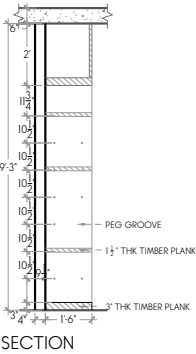
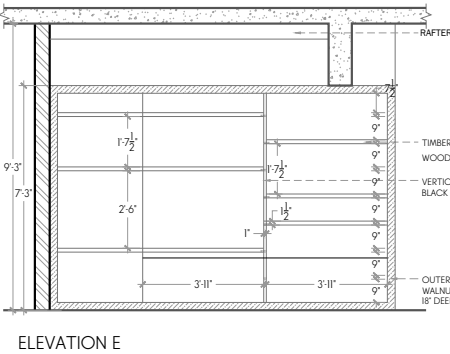
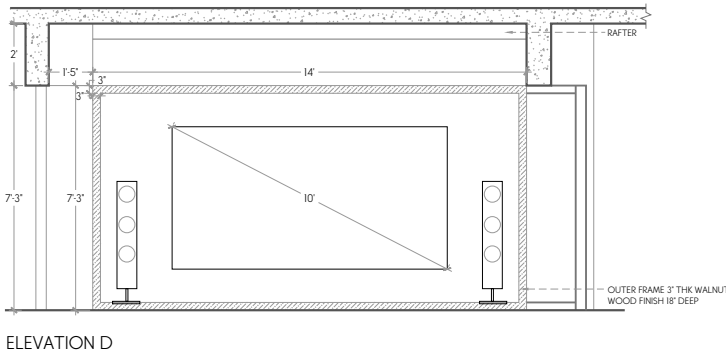
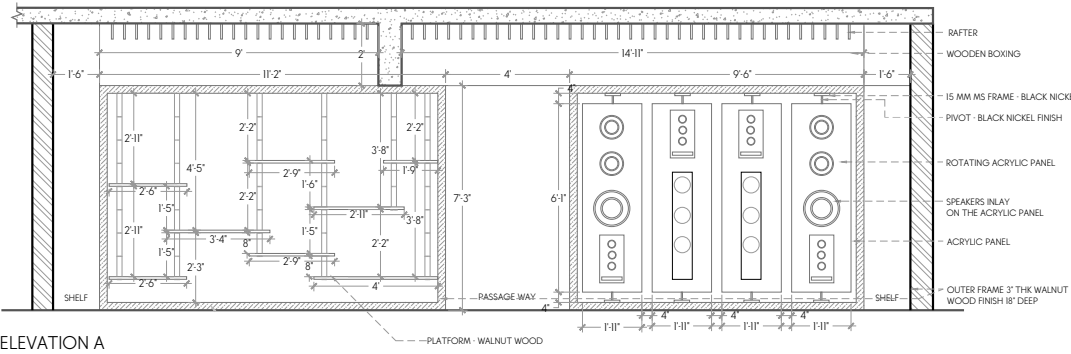
The project brief was to design a 2 story retail store of Home Automation products.

It housed 5 functioning Home Theaters which could be sampled by the customer and a Headphone display on the Second Floor.

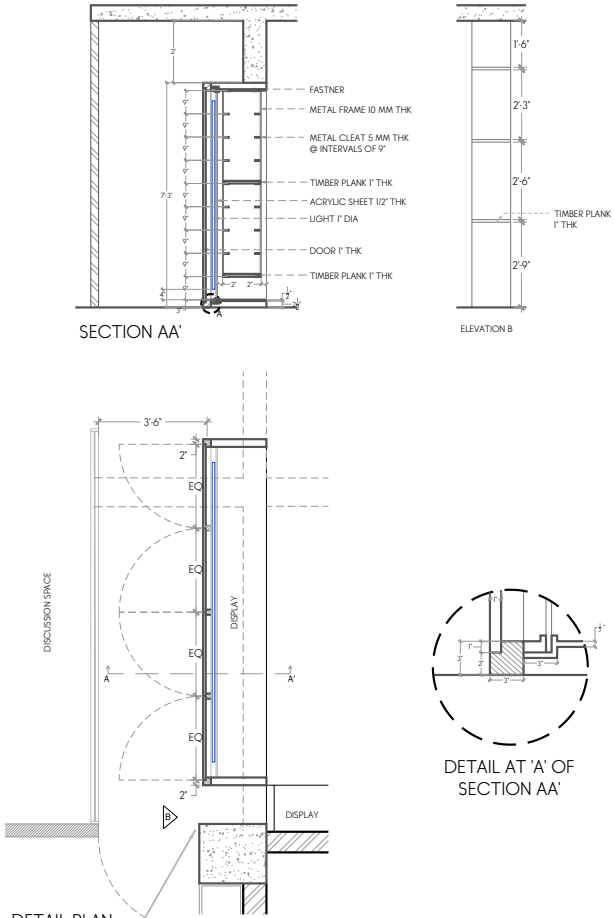
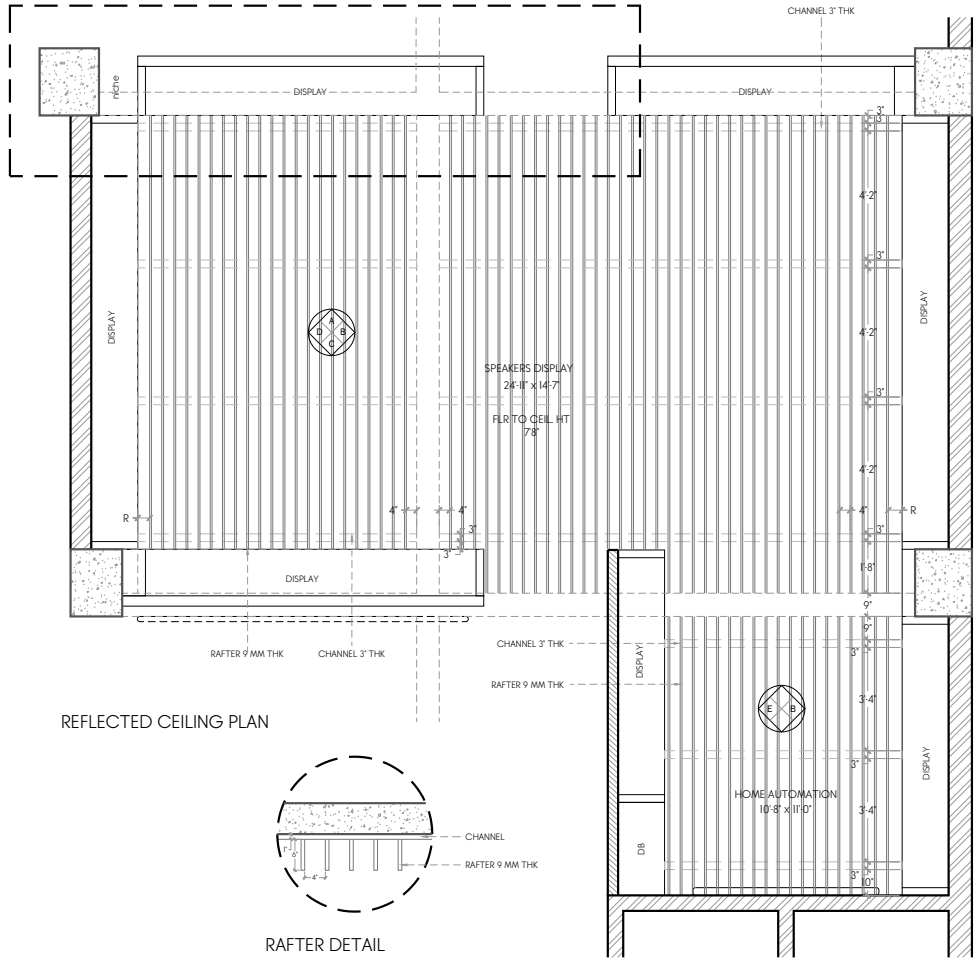
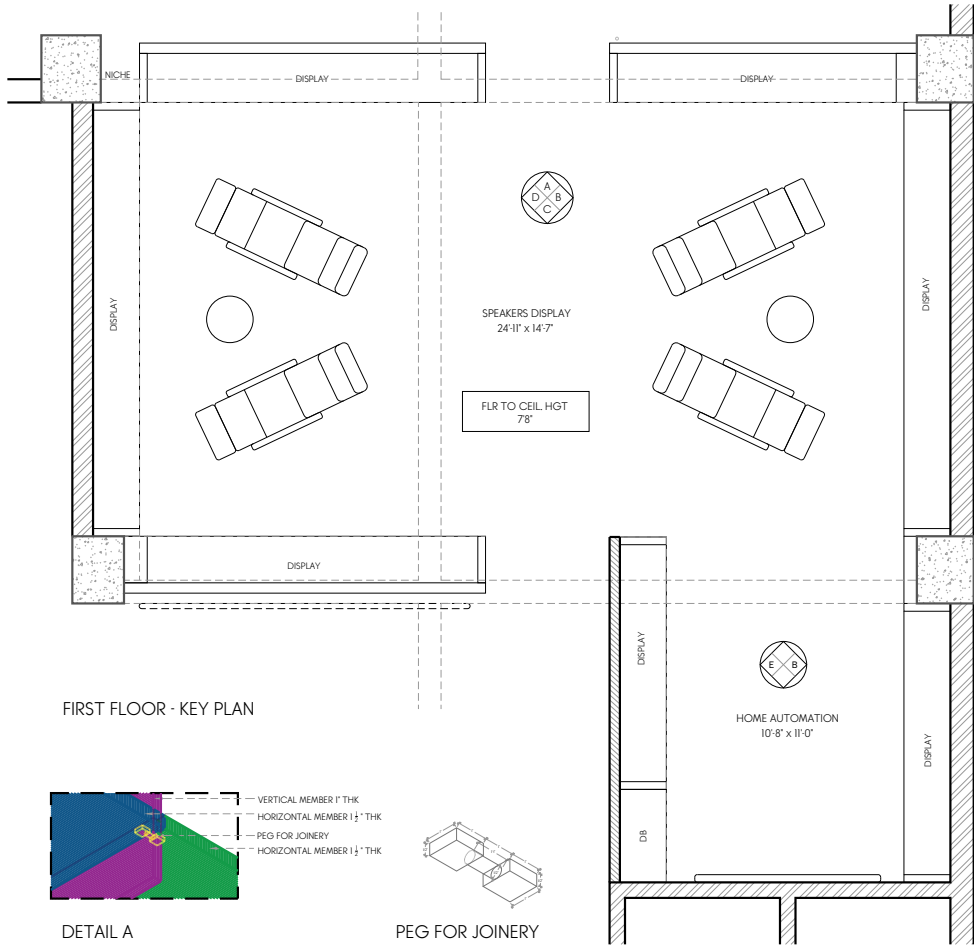
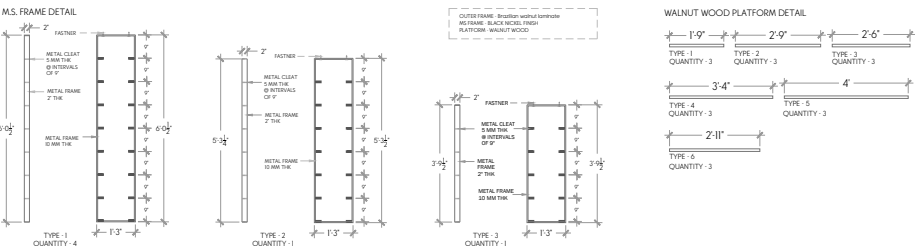
The First Floor was targeted for the small buyers and had a displays area for speakers and home automation products and a small model apartment as well as a Cabin for the MD, and a Discussion Area and Workspace for the other company members.



SPEAKER DISPLAY - HIFI AUDIO SYSTEMS

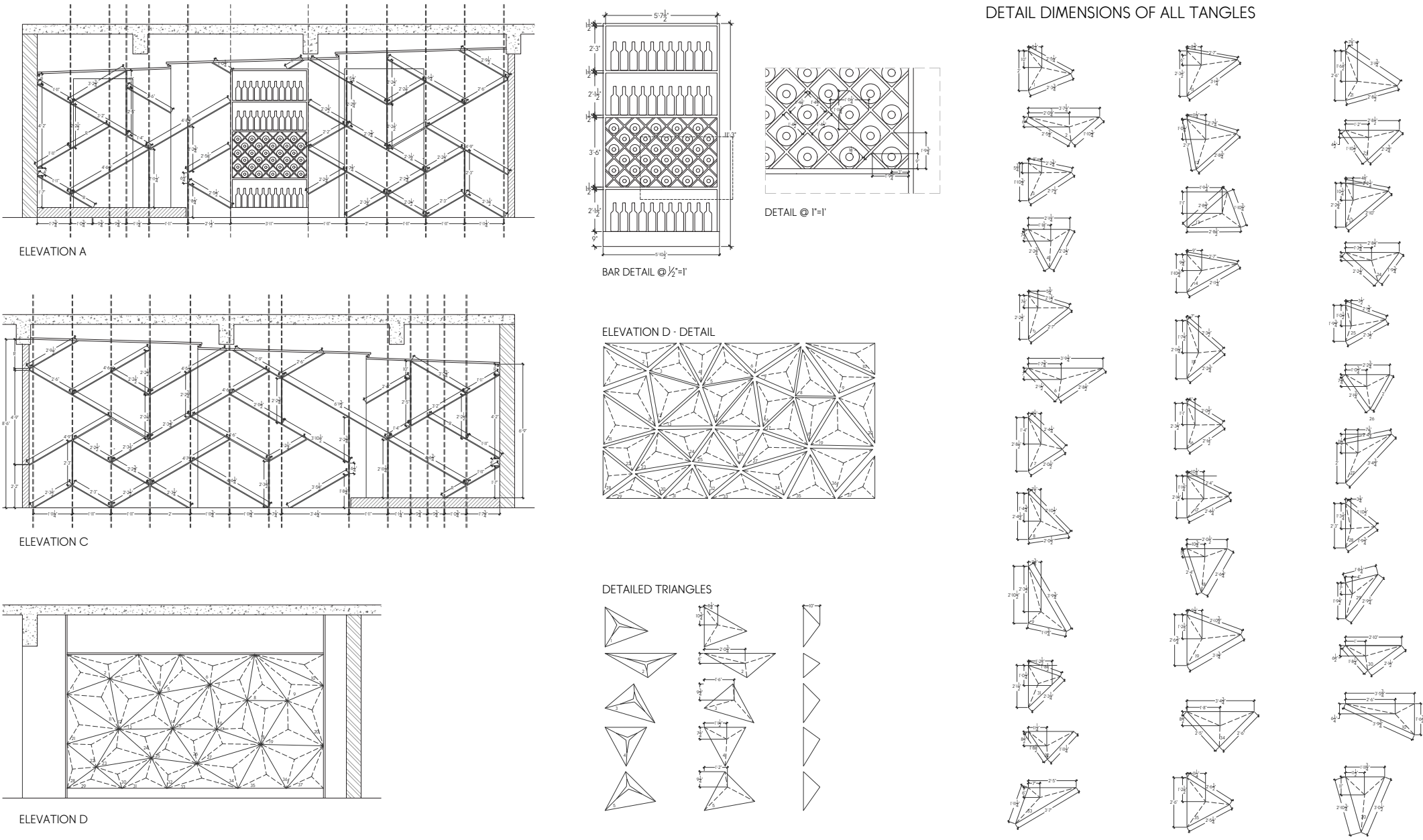


FABRICATION DETAIL FOR SHELVES - ELEVATION A





FABRICATION DRAWINGS OF HOME THEATRE 3



MODEL TO SITE



EVOLUTION OF DESIGN OF HOME THEATRE 4



1st option



2nd option



3rd option



4th option



## H MODI RESIDENCE

PROFESSIONAL PROJECT AT MODO DESIGNS

Residential, 2023

Location - Ahmedabad, Gujarat

Site Area - 6520 sq.ft

Status : Design development

Clients : Asit Shah

### WORK INPUTS

Conceptualisation, Design Development,  
Floor Plans, Sections, 3D Modelling,  
Rendering, and Client Presentations.



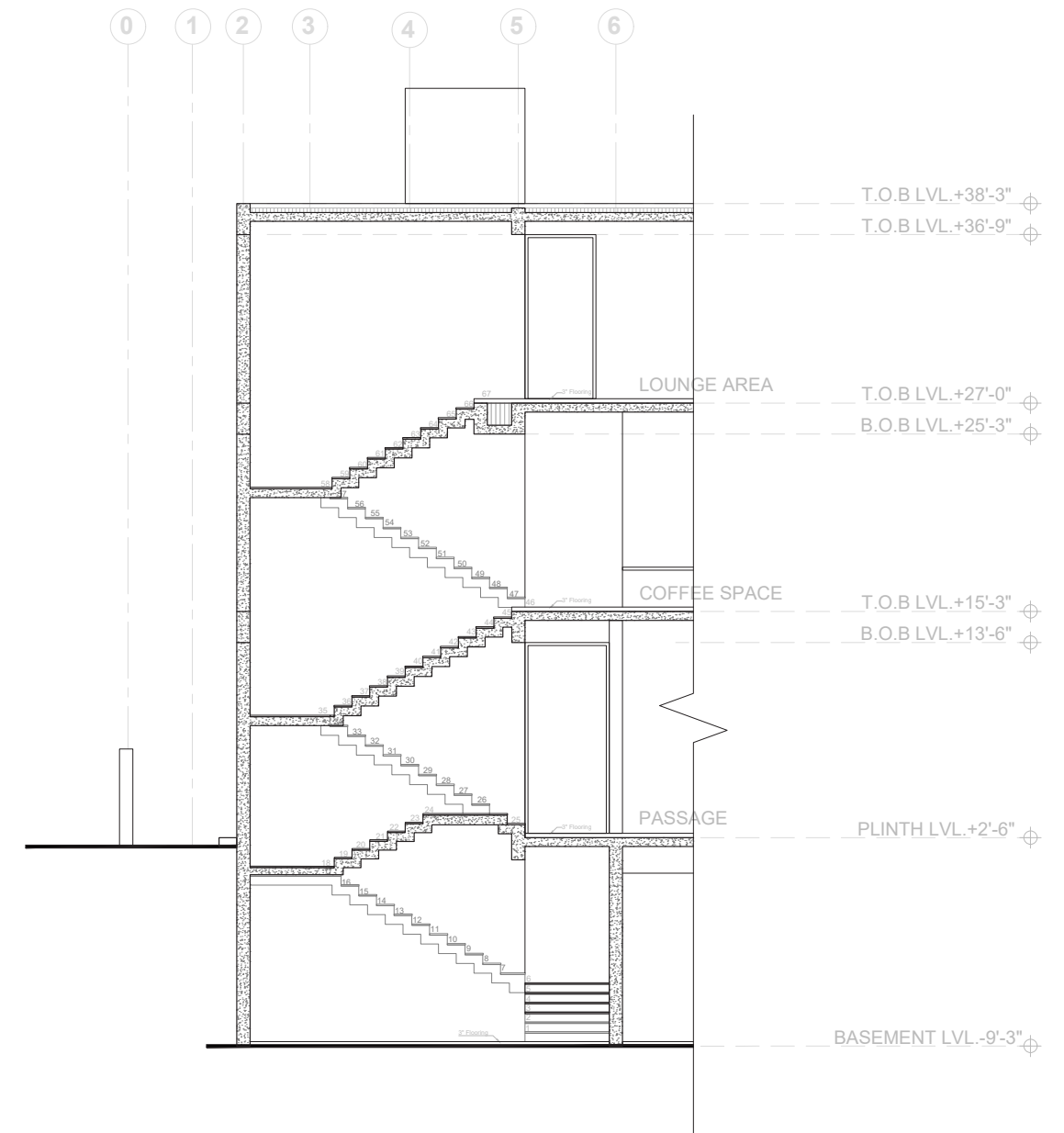
Situated in the middle of the city, this cozy site houses a family of two, an older couple looking to retire in their new home. Keeping this essential brief in mind, the house is designed as two blocks separated by open to sky space. The idea was to allow natural elements to flow into the blocks and engage the users with these elements and thereby connect them to nature. The front wing has the foyer, living, and verandah space which are more public in nature and are interpreted by a glass pavilion. The rear block houses the private bedroom spaces and kitchen and hence more stark and introverted in expression. The sense of openness and flow prevails through the house at the various levels as well.

The material palette is informal and light, with the walls comprising of a rough microtopping texture. The house uses reclaimed wood extensively giving a warm ambiance to the spaces.





GROUND FLOOR PLAN



STAIRCASE DETAIL DRAWING





## K SHAH HOUSE

PROFESSIONAL PROJECT AT MODO DESIGNS

Residential, 2023

Location - Ahmedabad, Gujarat

Site Area - 28430 sq.ft

Status : Detail Drawings

Clients : Kamal Shah

### WORK INPUTS

Conceptualisation, Design Development,

Floor Plans, Sections

3D Modelling, Rendering,

and Client Presentations.



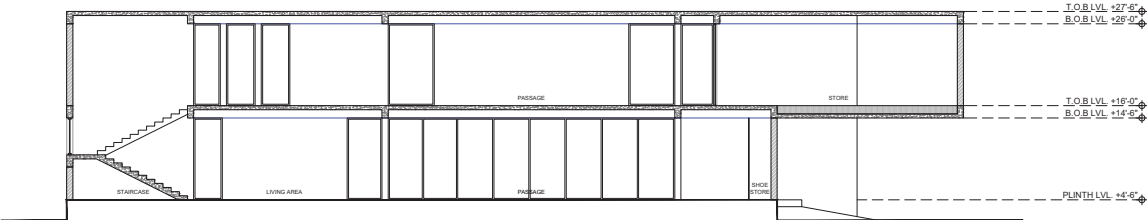
TERRACE OVERLOOKING THE GARDEN

This house, for three generations of a family, is a part of a gated community on the outskirts of Ahmedabad. The house is a ground plus one structure. The edge towards the garden in the North is opened up by a verandah. The front bay has a more transparent facade connecting the spaces with the garden.

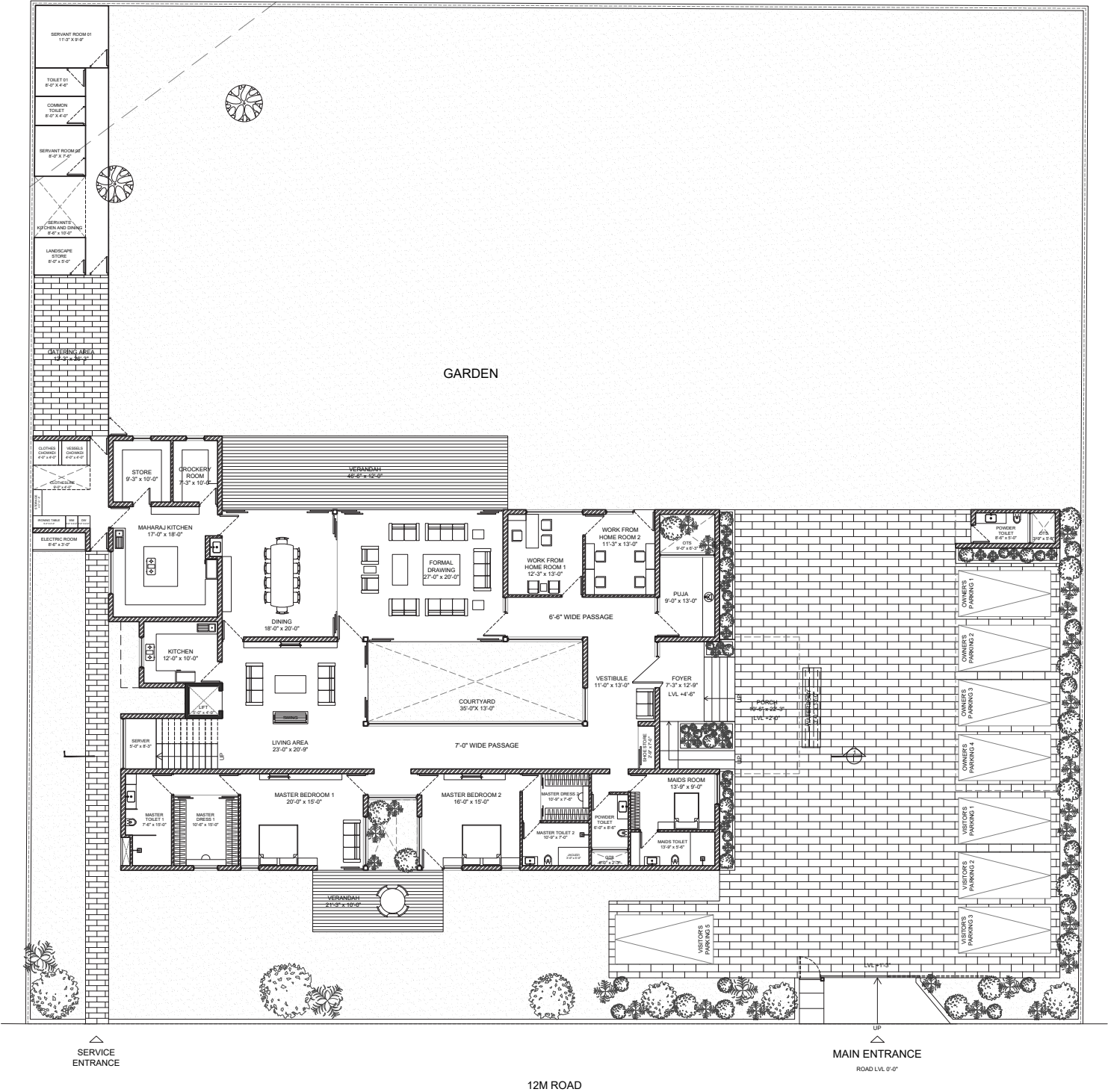
The spaces on the ground floor are formed around a central courtyard reflecting a similar nature to the ones in the pol houses of Ahmedabad. The house is intended as a flow of spaces, modulating light and changing vistas, but the most vital space would be semi open verandah which connects the living and dining spaces to the rear garden. Opening up in the North, this place which can be habituated in any time of the day and year, is where one is connected to the primary elements.

The materials used externally are exposed concrete and brick, wooden paneling and door windows, kota stone flooring creating an earthy palette. Internally there is a play of exposed as well as finished surfaces.





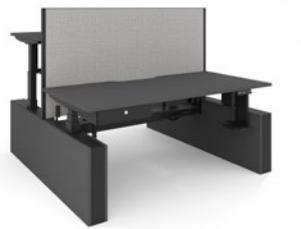
SECTION 1-1



GROUND FLOOR PLAN

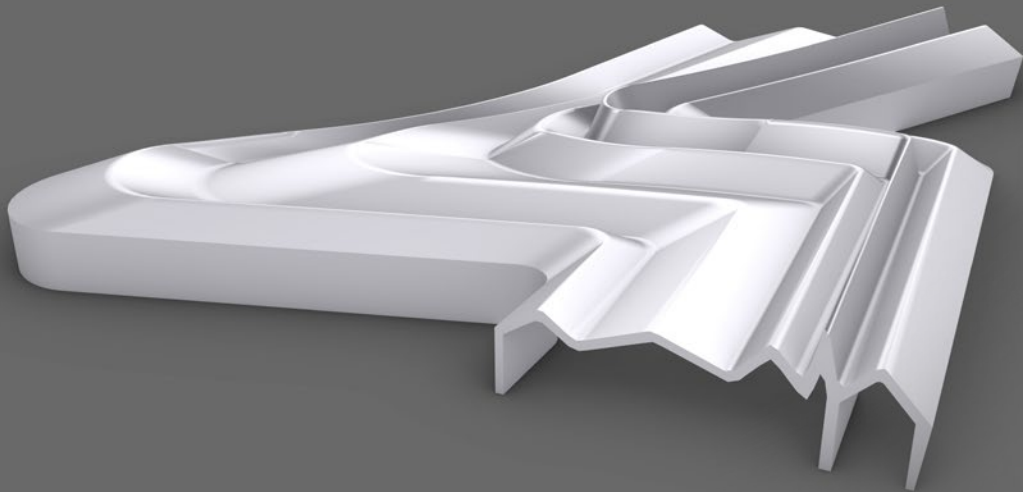








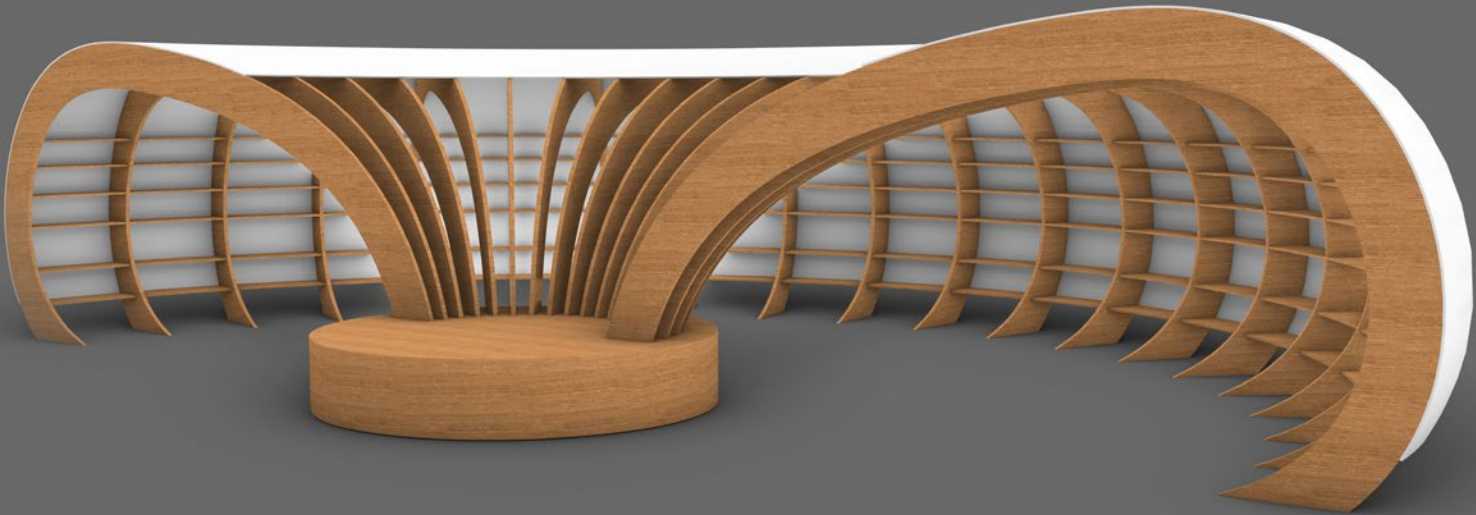
RHINO MODELS



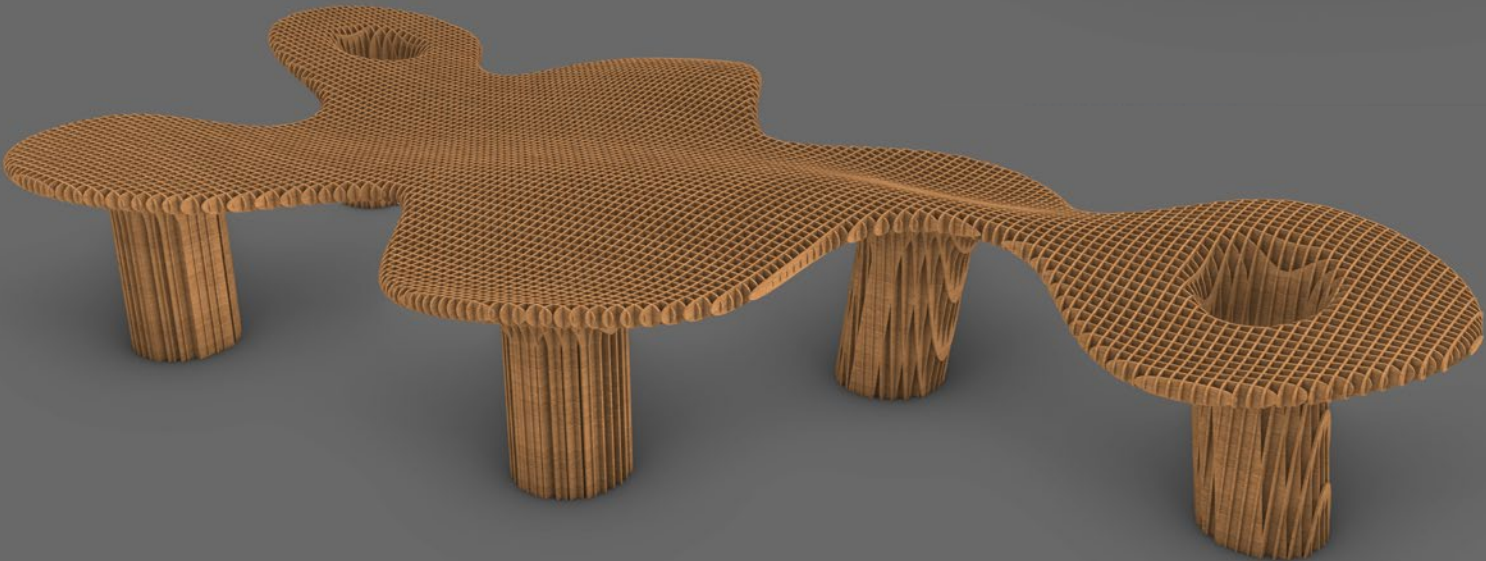
Riverside Museum, Zaha Hadid



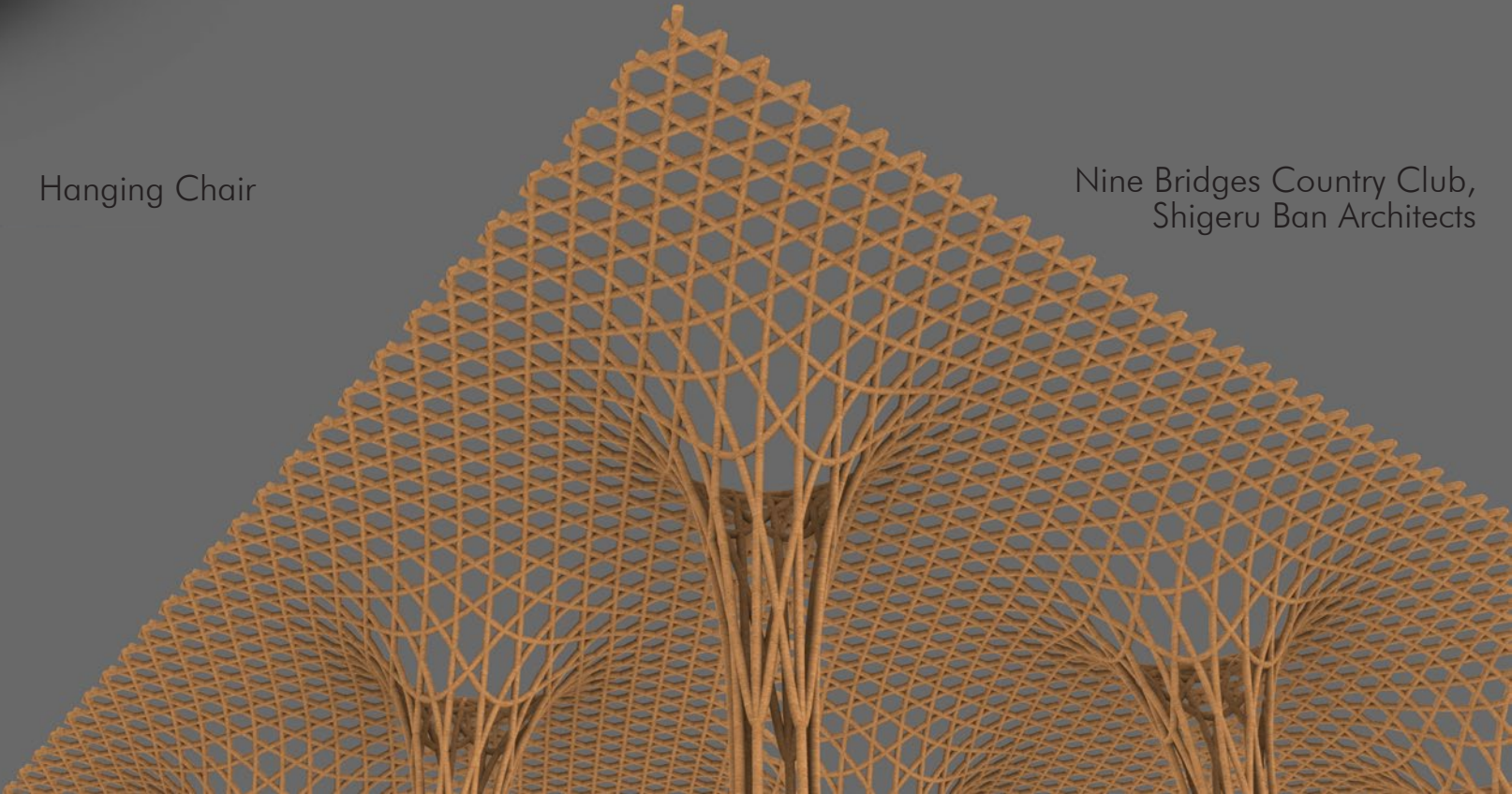
Hanging Chair



Outdoor Seafront Library



Metropol Parasol



Nine Bridges Country Club,  
Shigeru Ban Architects



ANOUSHKA SETHI

+91 8878833365  
asethidesigns@gmail.com  
anoushka Sethi6@gmail.com